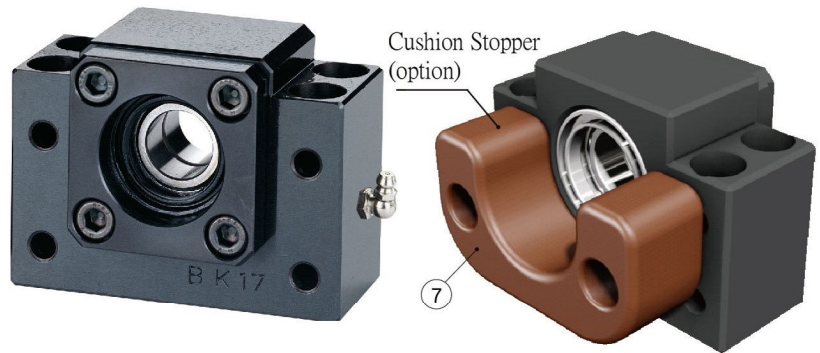


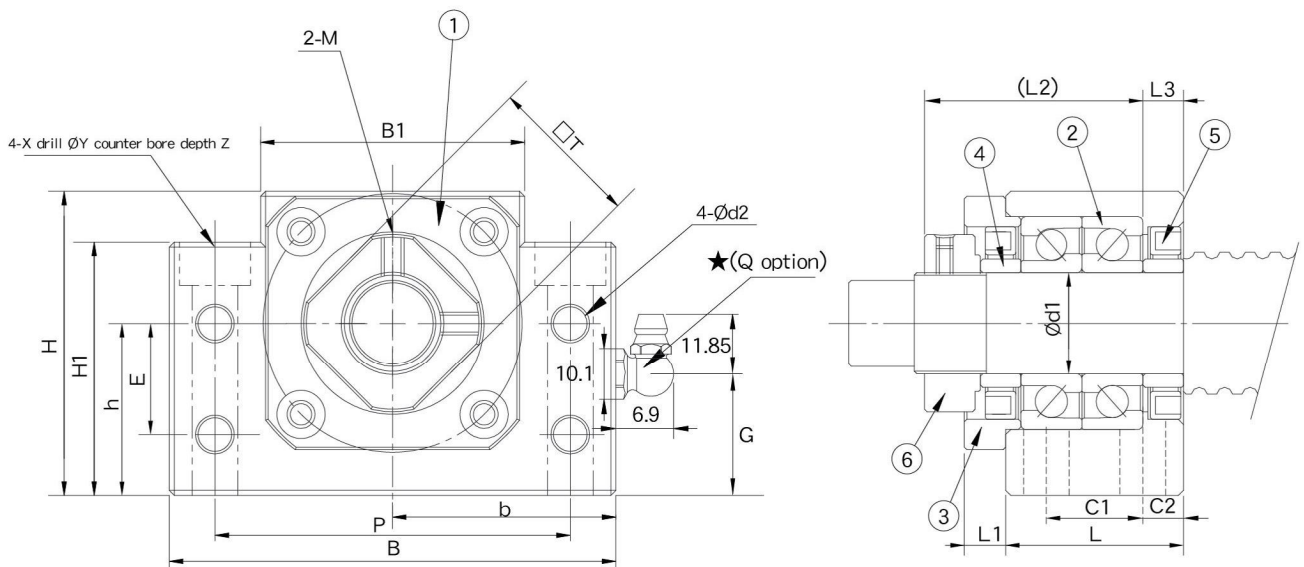
## Support Unit BK (fixed-side rectangular type)

No.	Part name	Qty
1	Housing	1
2	Bearing	1 set
3	Holding lid	1
4	Collar	2
5	Seal	2
6	Lock nut	1set
7	Cushion Stopper (option)	1



BK10~BK20

# BK



Unit : mm

Model No.	Shaft diameter d1	L	L1	L2	L3	B	H	b	h	B1	H1	E	P	C1	C2	d2	X	Y	Z	M	T	G	Q	Weight (Kgs)
								±0.02	±0.02															
BK10	10	25	5	29.5	5	60	39	30	22	34	32.5	15	46	13	6	5.5	6.6	10.8	5	M3	16	15	M6	0.4
BK12	12	25	5	29.5	5	60	43	30	25	34	32.5	18	46	13	6	5.5	6.6	10.8	1.5	M4	19	18	M6	0.42
BK15	15	27	6	32	6	70	48	35	28	40	38	18	54	15	6	5.5	6.6	11	6.5	M4	22	18	M6	0.59
BK17	17	35	9	44	7	86	64	43	39	50	55	28	68	19	8	6.6	9	14	8.5	M4	24	30	M6	1.34
BK20	20	35	8	43	8	88	60	44	34	52	50	22	70	19	8	6.6	9	14	8.5	M4	30	24	M6	1.2
BK25	25	42	12	54	9	106	80	53	48	64	70	33	85	22	10	9	11	17	11	M6	35	37	M6	2.37
BK30	30	45	14	61	9	128	89	64	51	76	78	33	102	23	11	11	14	20	13	M6	40	37	M6	3.37
BK35	35	50	14	67	12	140	96	70	52	88	79	35	114	26	12	11	14	20	13	M6	50	37	M6	4.43
BK40	40	61	18	76	15	160	110	80	60	100	90	37	130	33	14	14	18	26	17.5	M6	50	43	M6	6.84

## Support Unit BK (fixed-side rectangular type)

Order Coding	Model No.	Surface treatment	Applicable ballscrew accuracy grade	Bearing		Delivery date
				Model No.	Max. Starting torque (gf-cm)	
BK10	BK10	Black Oxide	C3 ~ C10	7000A P5	190	EX-STOCK
BK10_C5			C5 ~ C10	7000A P0	190	EX-STOCK
BK10_C3			C3	7000A P5	190	EX-STOCK
BK10_N		Electroless Nickel Plating	C3 ~ C10	7000A P5	190	EX-STOCK
BK10_C5N			C5 ~ C10	7000A P0	190	3 days
BK10_C3N			C3	7000A P5	190	3 days
BK12	BK12	Black Oxide	C3 ~ C10	7001A P5	210	EX-STOCK
BK12_C5			C5 ~ C10	7001A P0	210	EX-STOCK
BK12_C3			C3	7001A P5	210	EX-STOCK
BK12_N		Electroless Nickel Plating	C3 ~ C10	7001A P5	210	EX-STOCK
BK12_C5N			C5 ~ C10	7001A P0	210	EX-STOCK
BK12_C3N			C3	7001A P5	210	3 days
BK15	BK15	Black Oxide	C3 ~ C10	7002A P5	230	EX-STOCK
BK15_C5			C5 ~ C10	7002A P0	230	EX-STOCK
BK15_C3			C3	7002A P5	230	EX-STOCK
BK15_N		Electroless Nickel Plating	C3 ~ C10	7002A P5	230	EX-STOCK
BK15_C5N			C5 ~ C10	7002A P0	230	EX-STOCK
BK15_C3N			C3	7002A P5	230	3 days
BK17	BK17	Black Oxide	C3 ~ C10	7203A P5	370	EX-STOCK
BK17_C3			C3	7203A P5	370	3 days
BK17_N		Electroless Nickel Plating	C3 ~ C10	7203A P5	370	EX-STOCK
BK17_C3N			C3	7203A P5	370	3 days
BK20	BK20	Black Oxide	C3 ~ C10	7004A P5	380	EX-STOCK
BK20_C5			C5 ~ C10	7004A P0	380	3 days
BK20_C3			C3	7004A P5	380	3 days
BK20_N		Electroless Nickel Plating	C3 ~ C10	7004A P5	380	EX-STOCK
BK20_C5N			C5 ~ C10	7004A P0	380	3 days
BK20_C3N			C3	7004A P5	380	3 days



Black Oxide  
(Application : General case)



Electroless Nickel Plating  
(Application : Clean room)

**Note :**

1. All types make Preload.
2. All of bearings use Japanese & Taiwanese brand bearings(Model No. in blue), Assembly by DF way. The most suitable way for ballscrew use.
3. The standard type is without Q , if required, please advise in advance.

# Support Unit BK (fixed-side rectangular type)

Order Coding	Model No.	Surface treatment	Applicable ballscrew accuracy grade	Bearing		Delivery date 
				Model No.	Max. Starting torque (gf-cm)	
BK25	BK25	Black Oxide	C3 ~ C10	7205 P5	730	EX-STOCK
BK25_C5			C5 ~ C10	7205 P0	730	EX-STOCK
BK25B_C5			C5 ~ C10	7205B P0	730	EX-STOCK
BK25_C3			C3	7205 P5	730	EX-STOCK
BK25_N		Electroless Nickel Plating	C3 ~ C10	7205 P5	730	EX-STOCK
BK25_C5N			C5 ~ C10	7205 P0	730	3 days
BK25B_C5N			C5 ~ C10	7205B P0	730	3 days
BK25_C3N			C3	7205 P5	730	3 days
BK30_C5	BK30	Black Oxide	C5 ~ C10	7206 P0	1050	EX-STOCK
BK30B_C5			C5 ~ C10	7206B P0	1050	EX-STOCK
BK30_C5N		Electroless Nickel Plating	C5 ~ C10	7206 P0	1050	EX-STOCK
BK30B_C5N			C5 ~ C10	7206B P0	1050	3 days
BK35_C5	BK35	Black Oxide	C5 ~ C10	7207B P0	1320	EX-STOCK
BK35_C5N		Electroless Nickel Plating	C5 ~ C10	7207B P0	1320	3 days
BK40_C5	BK40	Black Oxide	C5 ~ C10	7208B P0	2050	EX-STOCK
BK40_C5N		Electroless Nickel Plating	C5 ~ C10	7208B P0	2050	EX-STOCK



Black Oxide  
(Application : General case)



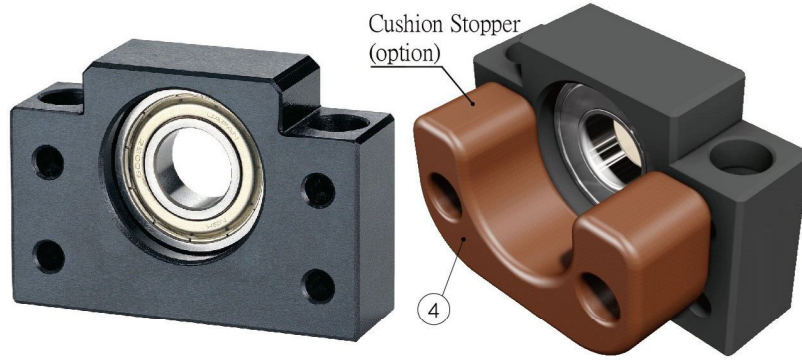
Electroless Nickel Plating  
(Application : Clean room)

Note :

1. All types make Preload.
2. All of bearings use Japanese & Taiwanese brand bearings(Model No. in blue), Assembly by DF way. The most suitable way for ballscrew use.
3. The standard type is without Q , if required, please advise in advance.

## Support Unit BF (Supported-side rectangular type)

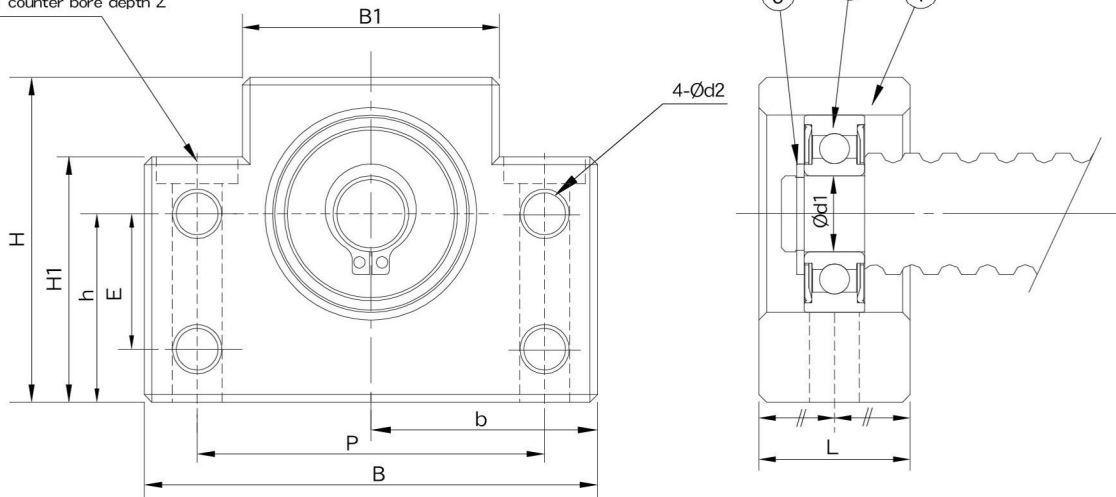
No.	Part name	Qty
1	Housing	1
2	Bearing	1 set
3	Snap ring	1
4	Cushion Stopper (option)	1




BF10~BF30

## BF

2-X drill  $\varnothing Y$  counter bore depth Z



Unit : mm

Model No.	Shaft diameter d1	L	B	H	b $\pm 0.02$	h $\pm 0.02$	B1	H1	E	P	d2	X	Y	Z	Bearing	Snap ring	Weight (Kgs)
BF10	8	20	60	39	30	22	34	32.5	15	46	5.5	6.6	10.8	5	608ZZ	S 08	0.3
BF12	10	20	60	43	30	25	34	32.5	18	46	5.5	6.6	10.8	1.5	6000ZZ	S 10	0.3
BF15	15	20	70	48	35	28	40	38	18	54	5.5	6.6	11	6.5	6002ZZ	S 15	0.38
BF17	17	23	86	64	43	39	50	55	28	68	6.6	9	14	8.5	6203ZZ	S 17	0.75
BF20	20	26	88	60	44	34	52	50	22	70	6.6	9	14	8.5	6004ZZ	S 20	0.77
BF20H	20	26	88	74	44	48	52	64	-	70	-	9	14	8.5	6004ZZ	S20	1.03
 SF20	20	30	106	80	53	48	64	70	-	85	-	11	17	11	6204ZZ	S20	-
BF25	25	30	106	80	53	48	64	70	33	85	9	11	17	11	6205ZZ	S 25	1.44
SF25	25	32	128	89	64	51	76	78	-	102	-	14	20	13	6205ZZ	S 25	2.17
BF30	30	32	128	89	64	51	76	78	33	102	11	14	20	13	6206ZZ	S 30	1.97
BF35	35	32	140	96	70	52	88	79	35	114	11	14	20	13	6207ZZ	S 35	2.27
SF40	40	32	140	96	70	52	88	79	-	114	-	14	20	13	6208ZZ	S 40	2.18
BF40	40	37	160	110	80	60	100	90	37	130	14	18	26	17.5	6208ZZ	S 40	3.28

## Support Unit BF (Supported-side rectangular type)

Order Coding	Model No.	Surface treatment	Applicable ballscrew accuracy grade	Bearing	Delivery date 		
BF10_C3	BF10	Black Oxide	C3 ~ C7	608ZZ	EX-STOCK	Black Oxide (Application : General case)	
BF10_C3N		Electroless Nickel Plating	C3 ~ C7	608VV	EX-STOCK		
BF12_C3	BF12	Black Oxide	C3 ~ C7	6000ZZ	EX-STOCK		
BF12_C3N		Electroless Nickel Plating	C3 ~ C7	6000VV	EX-STOCK		
BF15_C3	BF15	Black Oxide	C3 ~ C7	6002ZZ	EX-STOCK		
BF15_C3N		Electroless Nickel Plating	C3 ~ C7	6002VV	EX-STOCK		
BF17_C3	BF17	Black Oxide	C3 ~ C7	6203ZZ	EX-STOCK		
BF17_C3N		Electroless Nickel Plating	C3 ~ C7	6203VV	EX-STOCK		
BF20_C3	BF20	Black Oxide	C3 ~ C7	6004ZZ	EX-STOCK		Electroless Nickel Plating (Application : Clean room)
BF20_C3N		Electroless Nickel Plating	C3 ~ C7	6004VV	EX-STOCK		
BF25_C3	BF25	Black Oxide	C3 ~ C7	6205ZZ	EX-STOCK		
BF25_C3N		Electroless Nickel Plating	C3 ~ C7	6205VV	EX-STOCK		
BF30_C3	BF30	Black Oxide	C3 ~ C7	6206ZZ	EX-STOCK		
BF30_C3N		Electroless Nickel Plating	C3 ~ C7	6206VV	EX-STOCK		
BF35_C3	BF35	Black Oxide	C3 ~ C7	6207ZZ	EX-STOCK		
BF35_C3N		Electroless Nickel Plating	C3 ~ C7	6207VV	EX-STOCK		
BF40_C3	BF40	Black Oxide	C3 ~ C7	6208ZZ	EX-STOCK		
BF40_C3N		Electroless Nickel Plating	C3 ~ C7	6208VV	EX-STOCK		

**Note :**

1. It is used double pressed steel cages for Black Oxide type support units .
2. It is used double plastic cages for Electroless Nickel Plating type support units .
3. All of bearings use Japanese & Taiwanese brand bearings.