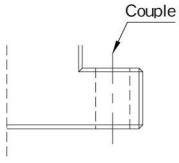
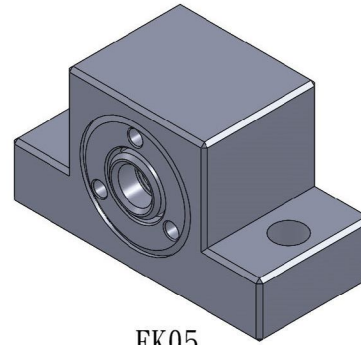


Support Unit EK  
(fixed-side rectangular type)

EK05

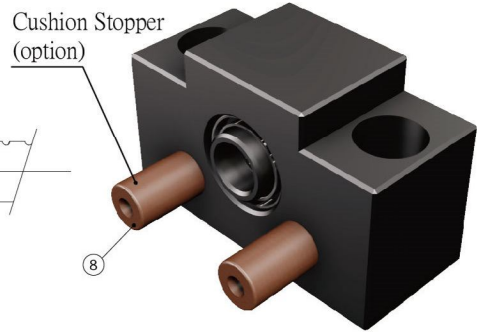
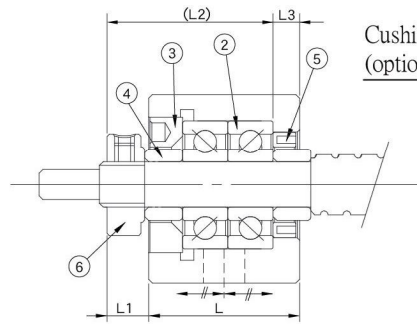
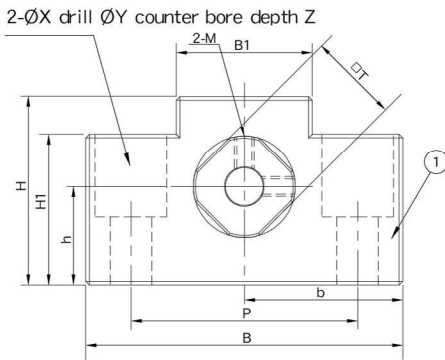


| No. | Part name                | Qty     |
|-----|--------------------------|---------|
| 1   | Housing                  | 1       |
| 2   | Bearing                  | 1 set   |
| 3   | Holding lid              | 1       |
| 4   | Collar                   | 2       |
| 5   | Seal                     | 1 ( 2 ) |
| 6   | Lock nut                 | 1       |
| 7   | Cushion Stopper (option) | 1       |
| 8   | Cushion Stopper (option) | 2       |



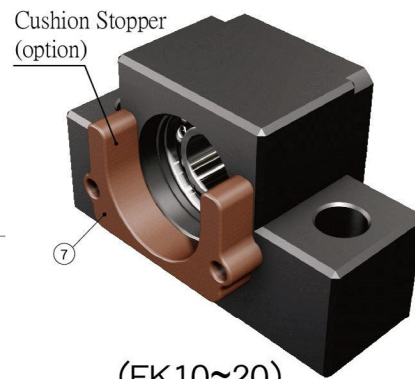
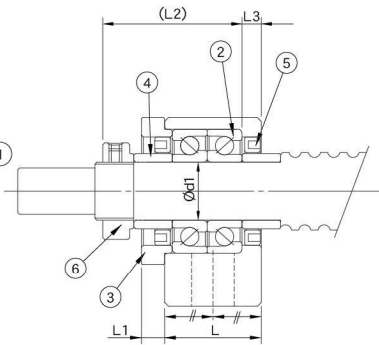
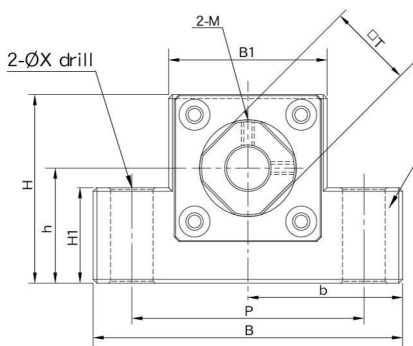
EK05

EK06, EK08



(EK06~08)

EK10~EK20



(EK10~20)

Unit : mm

| Model No. | Shaft diameter<br>d1 | L    | L1  | L2   | L3  | B   | H  | b     | h     | B1 | H1 | P  | X   | Y   | Z  | M  | T  | Weight<br>(Kgs) |
|-----------|----------------------|------|-----|------|-----|-----|----|-------|-------|----|----|----|-----|-----|----|----|----|-----------------|
|           |                      |      |     |      |     |     |    | ±0.02 | ±0.02 |    |    |    |     |     |    |    |    |                 |
| EK05      | 5                    | 16.5 | 5.5 | 18.5 | 3.5 | 36  | 21 | 18    | 11    | 20 | 8  | 28 | 4.5 | -   | -  | M3 | 11 | 0.1             |
| EK06      | 6                    | 20   | 5.5 | 22   | 3.5 | 42  | 25 | 21    | 13    | 18 | 20 | 30 | 5.5 | 9.5 | 11 | M3 | 12 | 0.16            |
| EK08      | 8                    | 23   | 7   | 26   | 4   | 52  | 32 | 26    | 17    | 25 | 26 | 38 | 6.6 | 11  | 12 | M3 | 14 | 0.26            |
| EK10-1    | 10                   | 24   | 6   | 29.5 | 6   | 65  | 43 | 32.5  | 21    | 36 | 20 | 52 | 6.6 | -   | -  | M3 | 16 | 0.45            |
| EK10      | 10                   | 24   | 6   | 29.5 | 6   | 70  | 43 | 35    | 25    | 36 | 24 | 52 | 9   | -   | -  | M3 | 16 | 0.46            |
| EK12      | 12                   | 24   | 6   | 29.5 | 6   | 70  | 43 | 35    | 25    | 36 | 24 | 52 | 9   | -   | -  | M4 | 19 | 0.44            |
| EK15      | 15                   | 25   | 6   | 36   | 5   | 80  | 50 | 40    | 30    | 41 | 25 | 60 | 11  | -   | -  | M4 | 22 | 0.58            |
| EK20      | 20                   | 42   | 10  | 50   | 10  | 95  | 58 | 47.5  | 30    | 56 | 25 | 75 | 11  | -   | -  | M4 | 30 | 1.35            |
| SK20      | 20                   | 42   | 10  | 50   | 10  | 106 | 80 | 53    | 48    | 64 | 70 | 85 | 11  | 17  | 11 | M4 | 30 | -               |



## Support Unit EK (fixed-side rectangular type)

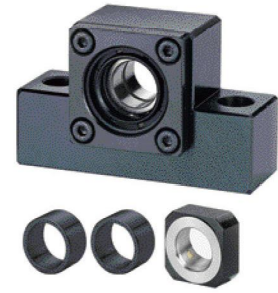
| Order Coding   | Model No. | Surface treatment          | Applicable ballscrew accuracy grade | Bearing   |                             | Delivery date  |
|--|-----------|----------------------------|-------------------------------------|-----------|-----------------------------|---|
|  |           |                            |                                     | Model No. | Max Starting torque (gf-cm) |   |
| EK06   | EK06      | Black Oxide                | C3~C10                              | 706A P5   | 50                          | EX-STOCK  |
| EK06_C5  |           |                            | C5 ~ C10                            | 706A P0   | 50                          | EX-STOCK  |
| EK06_C3  |           |                            | C3                                  | 706A P5   | 50                          | 3 days  |
| EK06_N   |           | Electroless Nickel Plating | C3~C10                              | 706A P5   | 50                          | 3 days  |
| EK06_C5N   |           |                            | C5 ~ C10                            | 706A P0   | 50                          | 3 days  |
| EK06_C3N   |           |                            | C3                                  | 706A P5   | 50                          | 3 days  |
|  <p>Black Oxide (Application : General case)</p>                |           |                            |                                     |           |                             |   |
| EK08   | EK08      | Black Oxide                | C3 ~ C10                            | 708A P5   | 90                          | EX-STOCK  |
| EK08_C5  |           |                            | C5 ~ C10                            | 708A P0   | 90                          | EX-STOCK  |
| EK08_C3  |           |                            | C3                                  | 708A P5   | 90                          | EX-STOCK  |
| EK08_N   |           | Electroless Nickel Plating | C3 ~ C10                            | 708A P5   | 90                          | EX-STOCK  |
| EK08_C5N   |           |                            | C5 ~ C10                            | 708A P0   | 90                          | 3 days  |
| EK08_C3N   |           |                            | C3                                  | 708A P5   | 90                          | 3 days  |
|  <p>Electroless Nickel Plating (Application : Clean room)</p>   |           |                            |                                     |           |                             |   |
| EK10   | EK10      | Black Oxide                | C3 ~ C10                            | 7000A P5  | 190                         | EX-STOCK  |
| EK10_C5  |           |                            | C5 ~ C10                            | 7000A P0  | 190                         | EX-STOCK  |
| EK10_C3  |           |                            | C3                                  | 7000A P5  | 190                         | EX-STOCK  |
| EK10_N   |           | Electroless Nickel Plating | C3 ~ C10                            | 7000A P5  | 190                         | EX-STOCK  |
| EK10_C5N   |           |                            | C5 ~ C10                            | 7000A P0  | 190                         | 3 days  |
| EK10_C3N   |           |                            | C3                                  | 7000A P5  | 190                         | 3 days  |
|  <p>Black Oxide (Application : General case)</p>               |           |                            |                                     |           |                             |   |
| EK12   | EK12      | Black Oxide                | C3 ~ C10                            | 7001A P5  | 210                         | EX-STOCK  |
| EK12_C5  |           |                            | C5 ~ C10                            | 7001A P0  | 210                         | EX-STOCK  |
| EK12_C3  |           |                            | C3                                  | 7001A P5  | 210                         | EX-STOCK  |
| EK12_N   |           | Electroless Nickel Plating | C3 ~ C10                            | 7001A P5  | 210                         | EX-STOCK  |
| EK12_C5N   |           |                            | C5 ~ C10                            | 7001A P0  | 210                         | 3 days  |
| EK12_C3N   |           |                            | C3                                  | 7001A P5  | 210                         | 3 days  |
|  <p>Electroless Nickel Plating (Application : Clean room)</p> |           |                            |                                     |           |                             |   |

**Note :**

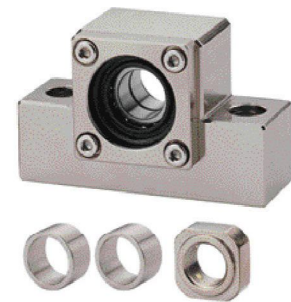
1. All types make Preload.
2. All of bearings use Japanese & Taiwanese brand bearings (Model No. in blue), Assembly by DF way. The most suitable way for ballscrew use.

# Support Unit EK (fixed-side rectangular type)

| Order Coding | Model No                   | Surface treatment          | Applicable ballscrew accuracy grade | Bearing     |                              | Delivery date |
|--------------|----------------------------|----------------------------|-------------------------------------|-------------|------------------------------|---------------|
|              |                            |                            |                                     | Model No.   | Max. Starting torque (gf-cm) |               |
| EK15         | EK15                       | Black Oxide                | C3 ~ C10                            | 7002A P5    | 230                          | EX-STOCK      |
| EK15_C5      |                            |                            | C5 ~ C10                            | 7002A P0    | 230                          | EX-STOCK      |
| EK15_C3      |                            |                            | C3                                  | 7002A P5    | 230                          | EX-STOCK      |
| EK15_N       |                            | Electroless Nickel Plating | C3 ~ C10                            | 7002A P5    | 230                          | EX-STOCK      |
| EK15_C5N     |                            |                            | C5 ~ C10                            | 7002A P0    | 230                          | 3 days        |
| EK15_C3N     |                            |                            | C3                                  | 7002A P5    | 230                          | 3 days        |
| EK20         | EK20                       | Black Oxide                | C3 ~ C10                            | 7204 P5     | 550                          | EX-STOCK      |
| EK20_C5      |                            |                            | C5 ~ C10                            | 7204 P0     | 550                          | 3 days        |
| EK20B_C5     |                            |                            | C5 ~ C10                            | 7204B P0    | 550                          | EX-STOCK      |
| EK20_C3      |                            |                            | C3                                  | 7204 P5     | 550                          | 3 days        |
| EK20_N       |                            | Electroless Nickel Plating | C3 ~ C10                            | 7204 P5     | 550                          | EX-STOCK      |
| EK20_C5N     |                            |                            | C5 ~ C10                            | 7204 P0     | 550                          | 3 days        |
| EK20B_C5N    |                            |                            | C5 ~ C10                            | 7204B P0    | 550                          | 3 days        |
| EK20_C3N     |                            |                            | C3                                  | 7204 P5     | 550                          | 3 days        |
| SK20         |                            |                            | SK20                                | Black Oxide | C3 ~ C10                     | 7204 P5       |
| SK20_C3      | C3                         | 7204 P5                    |                                     |             | 550                          | 3 days        |
| SK20_N       | Electroless Nickel Plating | C3 ~ C10                   |                                     | 7204 P5     | 550                          | Customized    |
| SK20_C3N     |                            | C3                         |                                     | 7204 P5     | 550                          | Customized    |



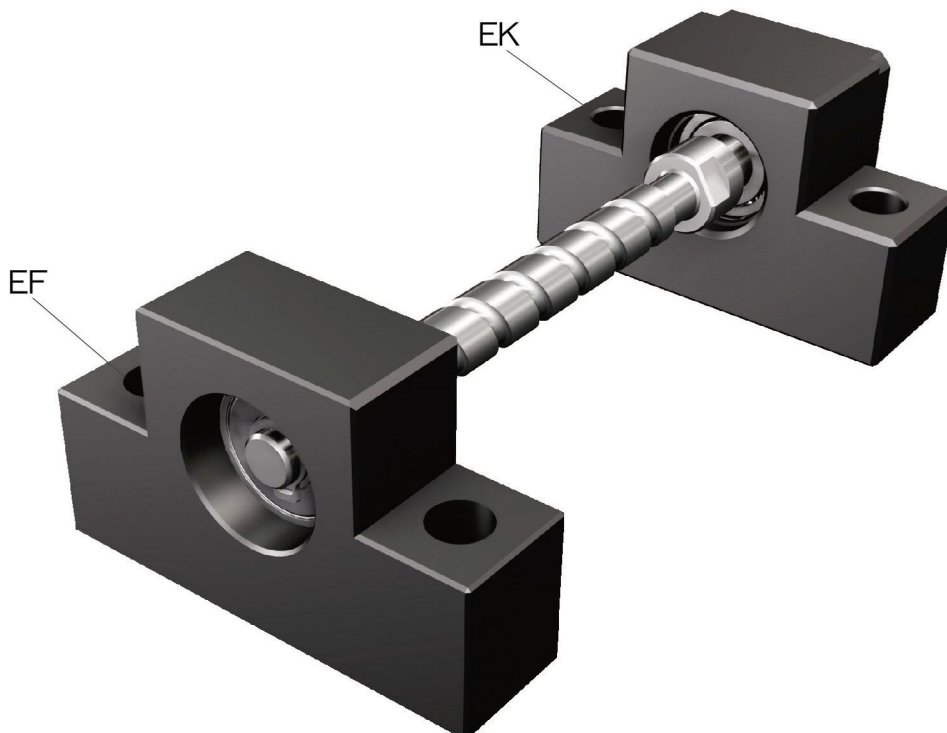
Black Oxide (Application : General case)



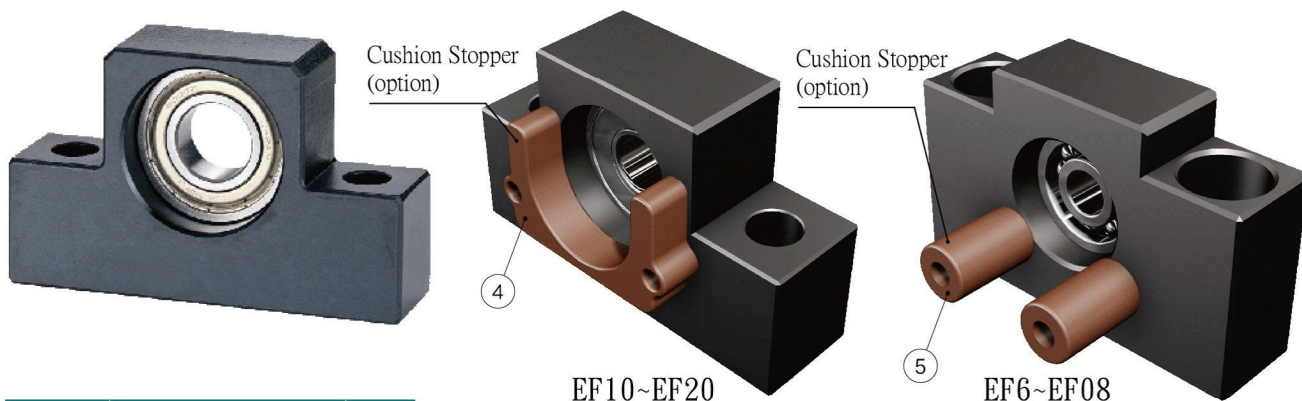
Electroless Nickel Plating (Application : Clean room)

Note :

1. All types make Preload.
2. All of bearings use Japanese & Taiwanese brand bearings (Model No. in blue), Assembly by DF way. The most suitable way for ballscrew use.

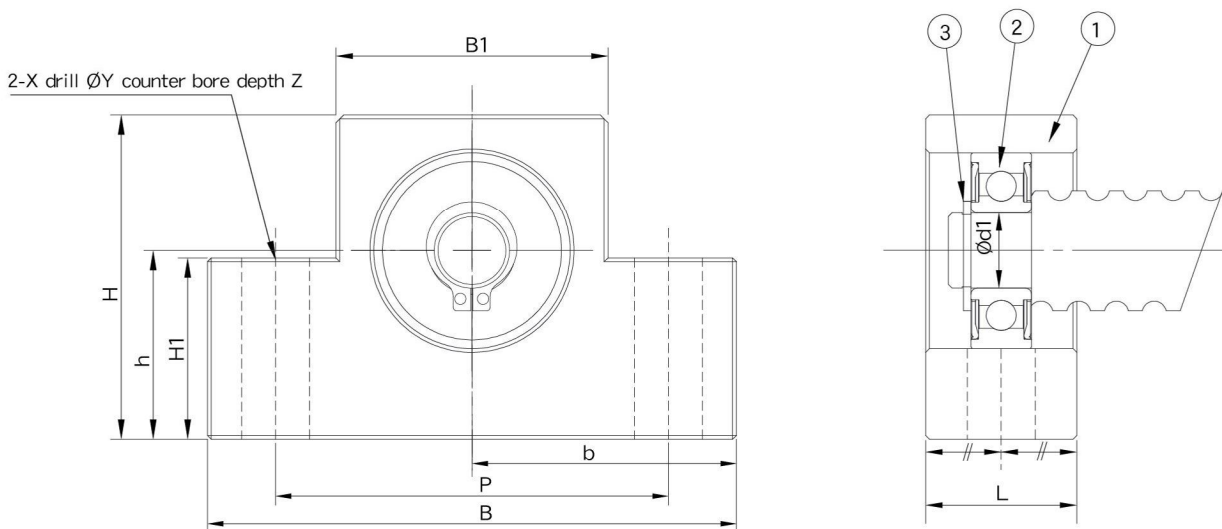


## Support Unit EF (supported-side rectangular type)



| No. | Part name                | Qty   |
|-----|--------------------------|-------|
| 1   | Housing                  | 1     |
| 2   | Bearing                  | 1 set |
| 3   | Snap ring                | 1     |
| 4   | Cushion Stopper (option) | 1     |
| 5   | Cushion Stopper (option) | 2     |

# EF



Unit : mm

| Model No. | Shaft diameter d1 | L  | B  | H  | b<br>±0.02 | h<br>±0.02 | B1 | H1 | P  | X   | Y   | Z  | Bearing | Snap ring | Weight (Kgs) |
|-----------|-------------------|----|----|----|------------|------------|----|----|----|-----|-----|----|---------|-----------|--------------|
| EF06      | 6                 | 12 | 42 | 25 | 21         | 13         | 18 | 20 | 30 | 5.5 | 9.5 | 11 | 606ZZ   | S 06      | 0.09         |
| EF08      | 6                 | 14 | 52 | 32 | 26         | 17         | 25 | 26 | 38 | 6.6 | 11  | 12 | 606ZZ   | S 06      | 0.16         |
| EF10      | 8                 | 20 | 70 | 43 | 35         | 25         | 36 | 24 | 52 | 9   | -   | -  | 608ZZ   | S 08      | 0.34         |
| EF12      | 10                | 20 | 70 | 43 | 35         | 25         | 36 | 24 | 52 | 9   | -   | -  | 6000ZZ  | S 10      | 0.32         |
| EF15      | 15                | 20 | 80 | 50 | 40         | 30         | 41 | 25 | 60 | 9   | -   | -  | 6002ZZ  | S 15      | 0.39         |
| EF20      | 20                | 26 | 95 | 58 | 47.5       | 30         | 56 | 25 | 75 | 11  | -   | -  | 6204ZZ  | S 20      | 0.64         |

## Support Unit EF (Supported-side rectangular type)

| Order Coding | Model No. | Surface treatment          | Applicable ballscrew accuracy grade | Bearing | Delivery date  |  |
|--------------|-----------|----------------------------|-------------------------------------|---------|---|--|
| EF06_C3      | EF06      | Black Oxide                | C3 ~ C7                             | 606ZZ   | EX-STOCK  | <br>Black Oxide (Application : General case)               |
| EF06_C3N     |           | Electroless Nickel Plating | C3 ~ C7                             | 606VV   | 3 days  |  |
| EF08_C3      | EF08      | Black Oxide                | C3 ~ C7                             | 606ZZ   | EX-STOCK  |  |
| EF08_C3N     |           | Electroless Nickel Plating | C3 ~ C7                             | 606VV   | EX-STOCK  |  |
| EF10_C3      | EF10      | Black Oxide                | C3 ~ C7                             | 608ZZ   | EX-STOCK  | <br>Electroless Nickel Plating (Application : Clean room) |
| EF10_C3N     |           | Electroless Nickel Plating | C3 ~ C7                             | 608VV   | EX-STOCK  |  |
| EF12_C3      | EF12      | Black Oxide                | C3 ~ C7                             | 6000ZZ  | EX-STOCK  |  |
| EF12_C3N     |           | Electroless Nickel Plating | C3 ~ C7                             | 6000VV  | EX-STOCK  |  |
| EF15_C3      | EF15      | Black Oxide                | C3 ~ C7                             | 6002ZZ  | EX-STOCK  |  |
| EF15_C3N     |           | Electroless Nickel Plating | C3 ~ C7                             | 6002VV  | EX-STOCK  |  |
| EF20_C3      | EF20      | Black Oxide                | C3 ~ C7                             | 6204ZZ  | EX-STOCK  |  |
| EF20_C3N     |           | Electroless Nickel Plating | C3 ~ C7                             | 6204VV  | EX-STOCK  |  |

**Note :**

1. It is used double pressed steel cages for Black Oxide type support units .
2. It is used double plastic cages for Electroless Nickel Plating type support units .
3. All of bearings use Japanese & Taiwanese brand bearings.