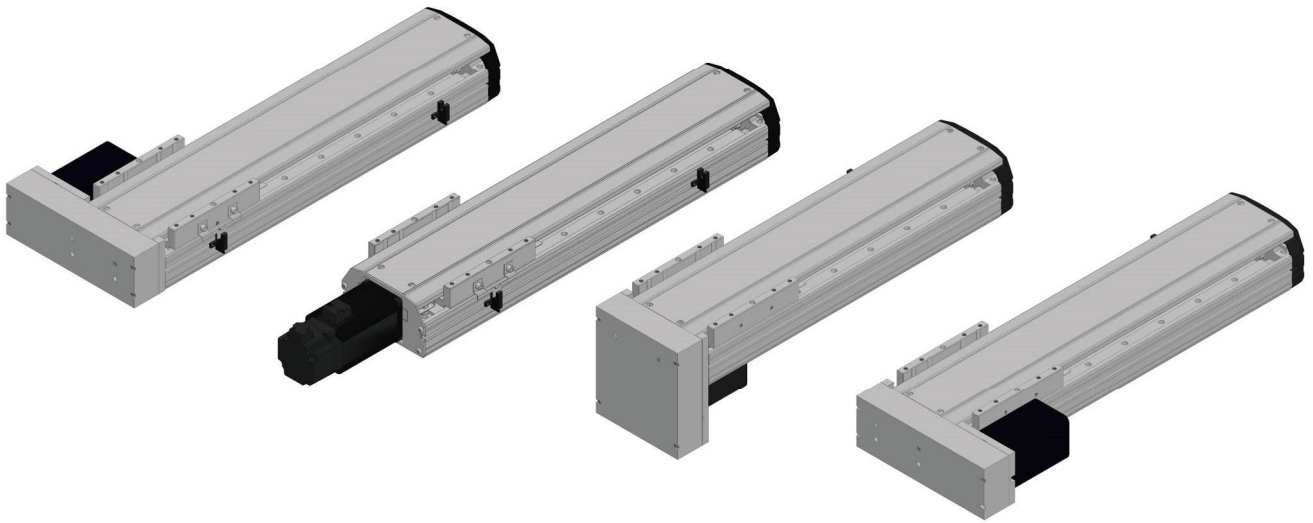


ETHS14 Single Axis Ball Screw Actuator



Max. Stroke 1000mm

Max. Speed 1600mm/s

Motor Power 200W
400W

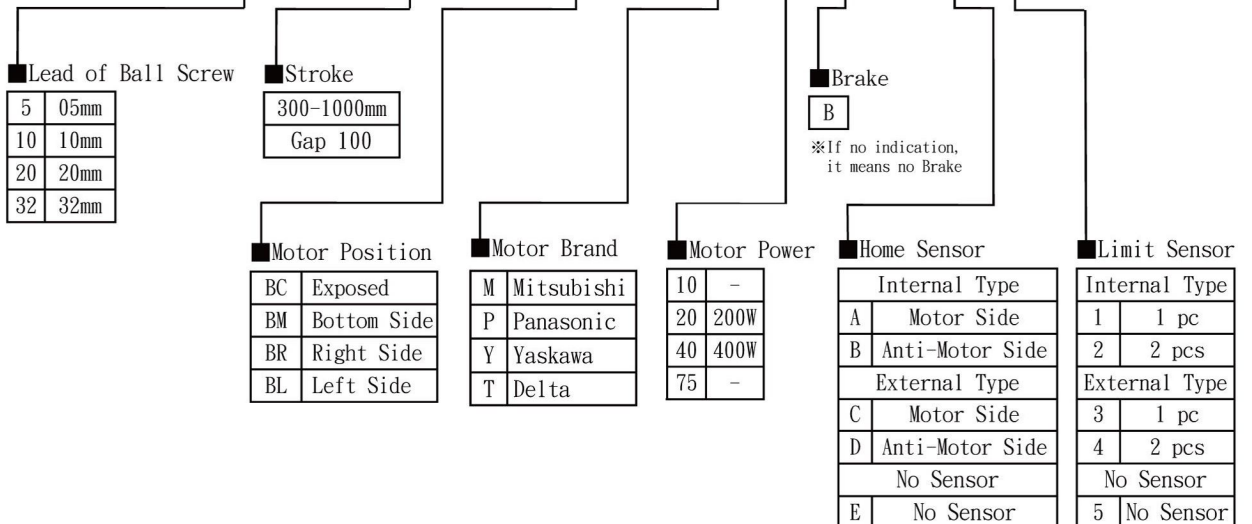
Ball Screw O.D. ϕ 16mm

Linear Guide Way 15x13-2

Order Coding

ETHS14 - L10 - 300 - BC - M20B - C 4 - 0001

Model no. Special Order no.

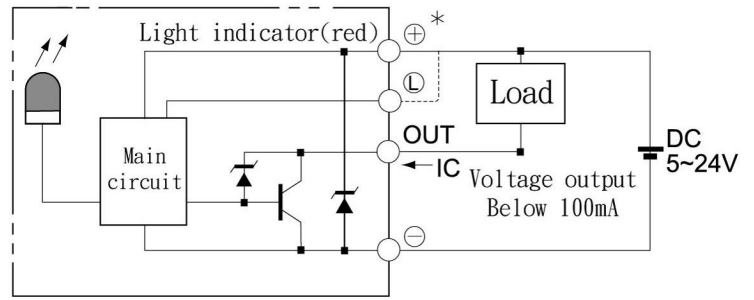


ETHS14 with 200W Motor

Specification

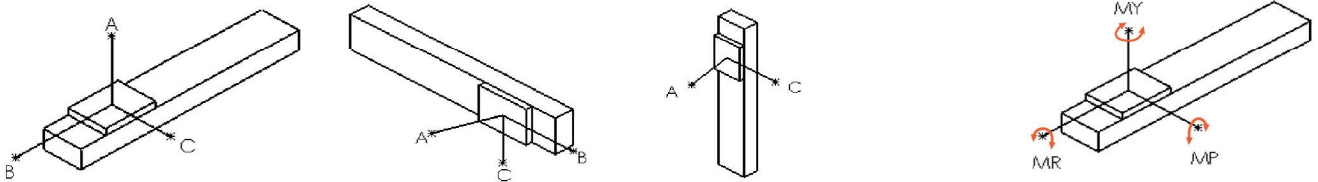
Spec	Repeatability (mm)		±0.01			
	Ball Screw Lead (mm)		5	10	20	32
	Max. Speed (mm/s)		250	500	1000	1600
	Max. Load Capacity	Horizontal (kg)	95	75	35	15
		Vertical (kg)	27	18	7	-
	Rated Thrust (N)		683	341	174	107
Stroke (mm)		300-1000mm/Gap 100				
Parts	AC Servo Motor Power (W)		200			
	Ball Screw O.D. (mm)		C7Ø16			
	High Rigidity Linear Guide Way (mm)		W15xH13			
	Coupling (mm)		10X14			
	Home Sensor	External	EE-SX672(NPN)			
Internal		EE-SX674(NPN)				

Sensor Layout



※When the stroke is over 750mm, we recommend to reduce the speed to avoid the runout of ball screw.
 ※Motor Acceleration and deceleration time setting 0.2 seconds

Allowable Overhang Table / Static Loading Moment



Unit : mm

Horizontal Installation		A	B	C
5 Lead	60kg	2512	242	232
	80kg	1811	172	164
	95kg	1537	138	133
10 Lead	30kg	2727	470	430
	50kg	1577	266	242
	75kg	1004	164	150
20 Lead	10kg	2304	1222	1028
	22kg	1443	540	451
	35kg	1005	324	271
32 Lead	10kg	1555	840	623
	15kg	1033	545	405

Unit : mm

Wall Mount Installation		A	B	C
5 Lead	55kg	257	269	2883
	75kg	178	186	2000
	95kg	133	138	1537
10 Lead	35kg	363	395	2368
	55kg	218	238	1445
	75kg	150	164	1004
20 Lead	12kg	854	1019	2552
	20kg	500	596	1588
	35kg	271	324	1005
32 Lead	8kg	787	1060	1980
	15kg	405	545	1033

Unit : mm

Vertical Installation		A	C
5 Lead	15kg	1118	1118
	22kg	770	770
	27kg	626	626
10 Lead	10kg	1500	1500
	14kg	1072	1072
	18kg	833	833
20 Lead	4kg	2980	2980
	7kg	1700	1700

Unit : N.m

Horizontal Operation	
MY	551
MP	552
MR	485

※ The value in the table indicates the center of gravity.
 ※ Under conforming catalog specification, the guarantee life is 10,000 km.
 ※ The catalog specification is not applicable to use for ceiling-mount. Please contact us for details.

Applicable Motor Brand

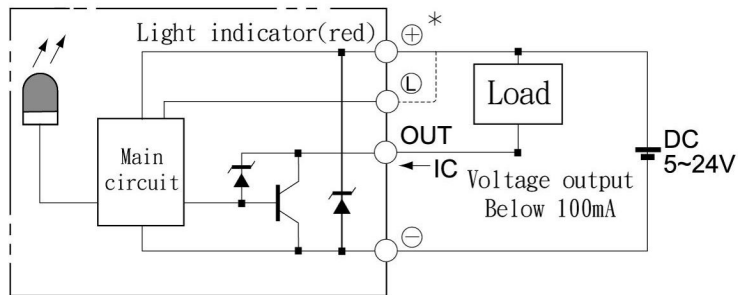
Brand	Label	Brake	Motor Power (W)	AC-Voltage (V)	Motor Model	Driver Model
Mitsubishi	M	No Brake (Horizontal Type)	200	220	HG - KR23	MR-J4-20A
		With Brake (Vertical Type)	200	220	HG - KR23B	MR-J4-20A
Panasonic	P	No Brake (Horizontal Type)	200	220	MHMD022G1U	MADHT1507
		With Brake (Vertical Type)	200	220	MHMD022G1V	MADHT1507
Delta	T	No Brake (Horizontal Type)	200	220	ECMA-C20602ES	ASD-B20221-B
		With Brake (Vertical Type)	200	220	ECMA-C20602FS	ASD-B20221-B

ETHS14 with 400W Motor

Specification

Spec	Repeatability (mm)		±0.01			
	Ball Screw Lead (mm)		5	10	20	32
	Max. Speed (mm/s)		250	500	1000	1600
	Max. Load Capacity	Horizontal (kg)	110	88	40	30
		Vertical (kg)	33	22	10	8
	Rated Thrust (N)		1388	694	347	218
Stroke (mm)		300-1000mm/Gap 100				
Parts	AC Servo Motor Power (W)		400			
	Ball Screw O.D. (mm)		C7Ø16			
	High Rigidity Linear Guide Way (mm)		W15xH13			
	Coupling (mm)		14x10			
	Home Sensor	External	EE-SX672(NPN)			
Internal		EE-SX674(NPN)				

Sensor Layout

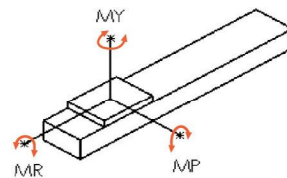
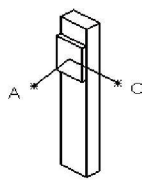
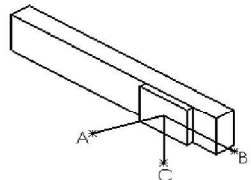
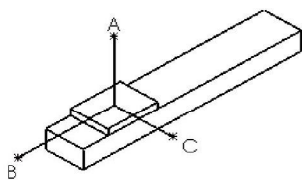


※When the stroke is over 750mm, we recommend to reduce the speed to avoid the runout of ball screw.

※Motor Acceleration and deceleration time setting 0.2 seconds

Allowable Overhang Table

Static Loading Moment



Unit : mm

Horizontal Installation		A	B	C
5 Lead	60kg	2512	242	232
	80kg	1811	172	164
	110kg	1284	114	108
10 Lead	30kg	2727	470	430
	50kg	1577	266	242
	88kg	854	134	122
20 Lead	10kg	2304	1222	1028
	22kg	1443	540	451
	40kg	860	277	233
32 Lead	15kg	1033	545	405
	25kg	604	311	233
	30kg	495	251	188

Unit : mm

Wall Mount Installation		A	B	C
5 Lead	55kg	257	269	2883
	75kg	178	186	2000
	110kg	108	114	1284
10 Lead	35kg	363	395	2368
	55kg	218	238	1445
	88kg	123	134	854
20 Lead	12kg	854	1019	2552
	20kg	500	596	1588
	40kg	233	277	860
32 Lead	15kg	405	545	1033
	30kg	188	251	495

Unit : mm

Vertical Installation		A	C
5 Lead	15kg	1118	1118
	22kg	770	770
	33kg	513	513
10 Lead	10kg	1500	1500
	14kg	1072	1072
	22kg	682	682
20 Lead	7kg	1700	1700
	10kg	1188	1188
32 Lead	5kg	1503	1503
	8kg	944	944

Unit : Nm

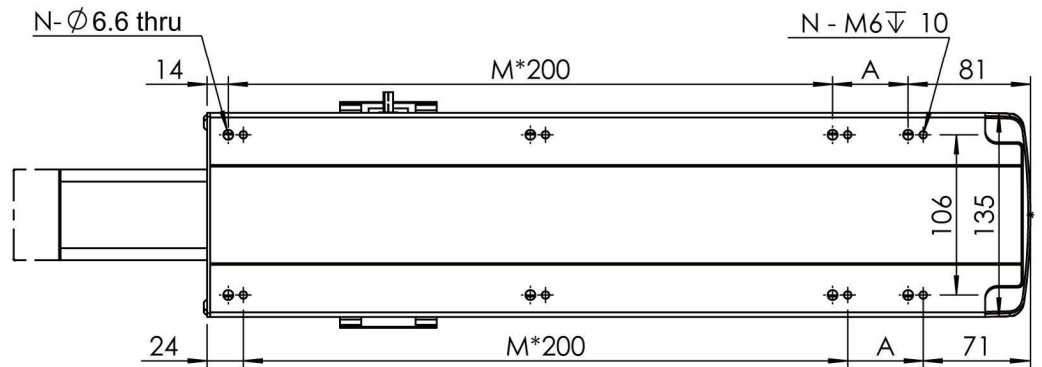
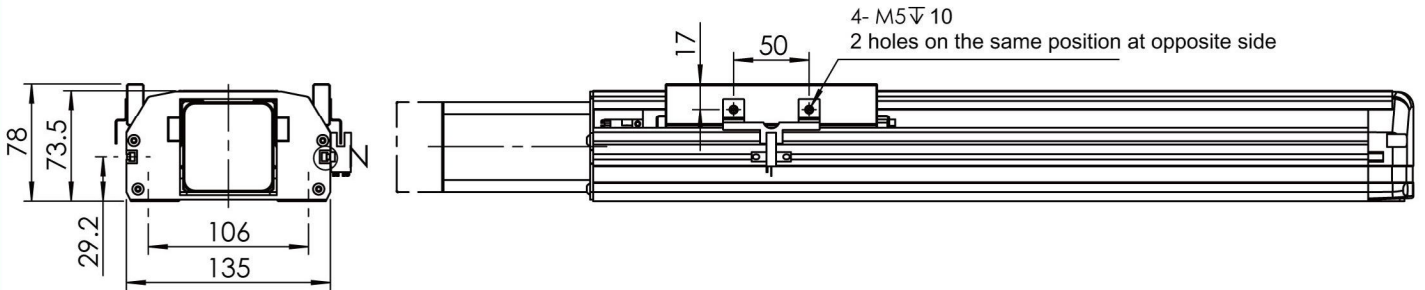
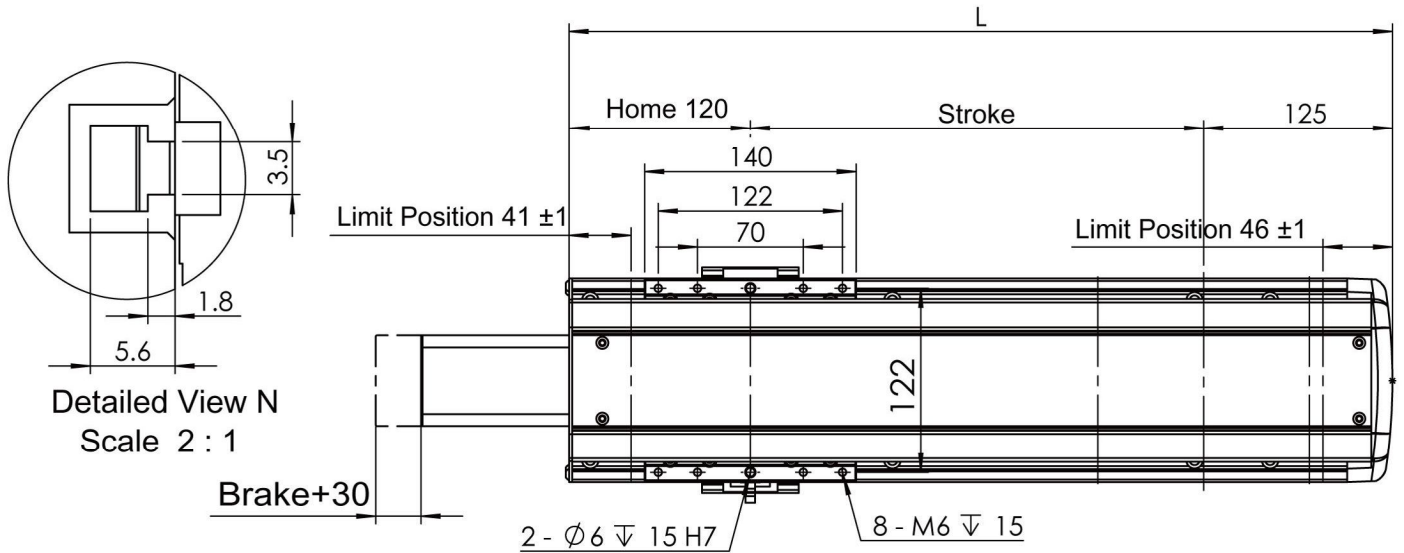
Horizontal Operation	
MY	551
MP	552
MR	485

※ The value in the table indicates the center of gravity ◦
 ※ Under conforming catalog specification, the guarantee life is 10,000 km.
 ※ The catalog specification is not applicable to use for ceiling-mount. Please contact us for details.

Applicable Motor Brand

Brand	Label	Brake	Motor Power (W)	AC-Voltage (V)	Motor Model	Driver Model
Mitsubishi	M	No Brake (Horizontal Type)	400	220	HG - KR43	MR-J4-40A
		With Brake (Vertical Type)	400	220	HG - KR43B	MR-J4-40A
Panasonic	P	No Brake (Horizontal Type)	400	220	MHMD042G1U	MBDHT2510
		With Brake (Vertical Type)	400	220	MHMD042G1V	MBDHT2510
Delta	T	No Brake (Horizontal Type)	400	220	ECMA-C20604ES	ASD-B20421-B
		With Brake (Vertical Type)	400	220	ECMA-C20604FS	ASD-B20421-B

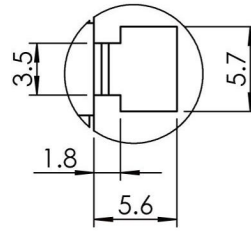
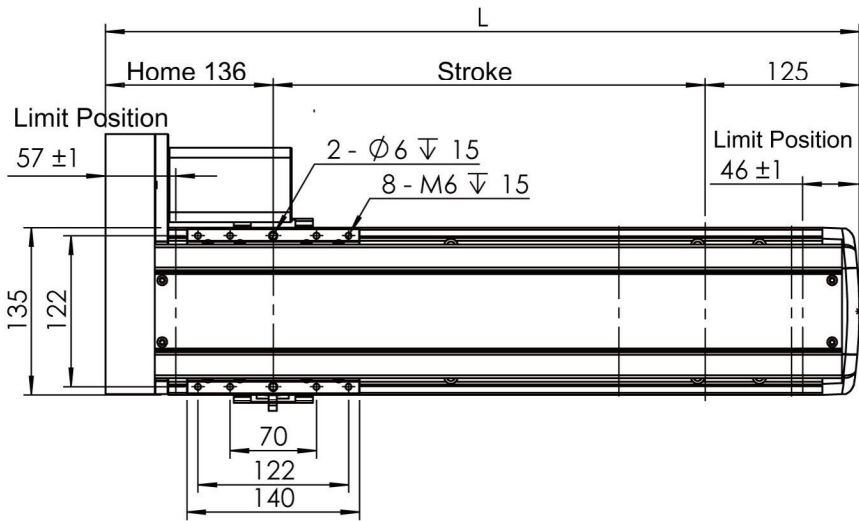
ETHS14 Motor Exposed



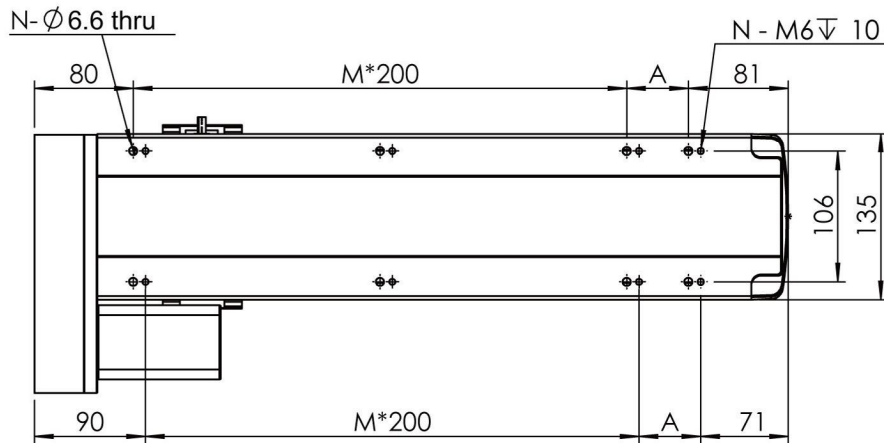
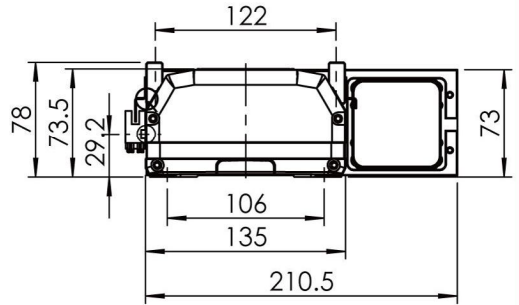
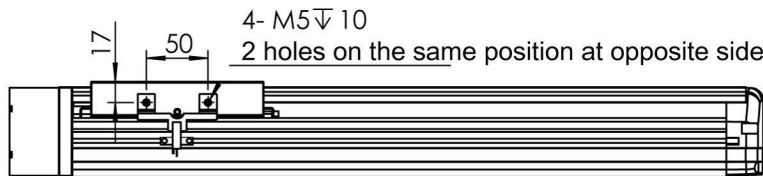
Unit : mm

Stroke	300	400	500	600	700	800	900	1000
L	545	645	745	845	945	1045	1145	1245
A	50	150	50	150	50	150	50	150
M	2	2	3	3	4	4	5	5
N	8	8	10	10	12	12	14	14

ETHS14 Motor Right Side



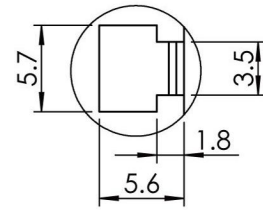
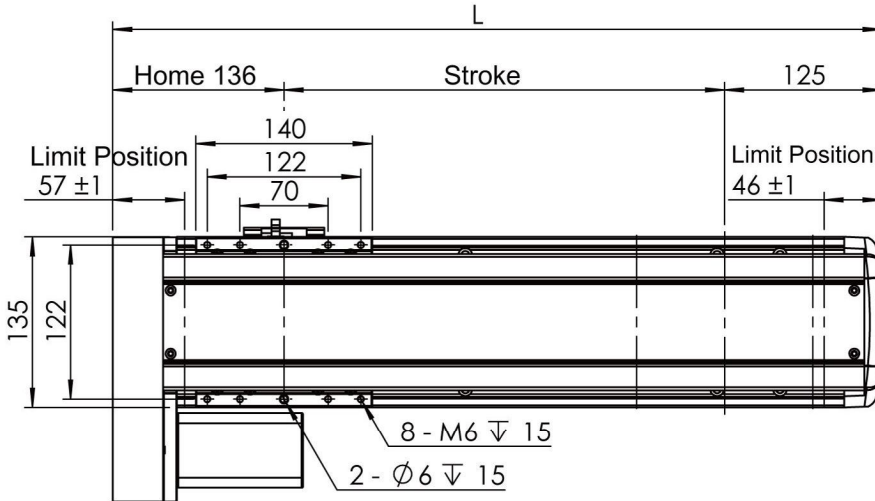
Detailed View Q
Scale 2 : 1



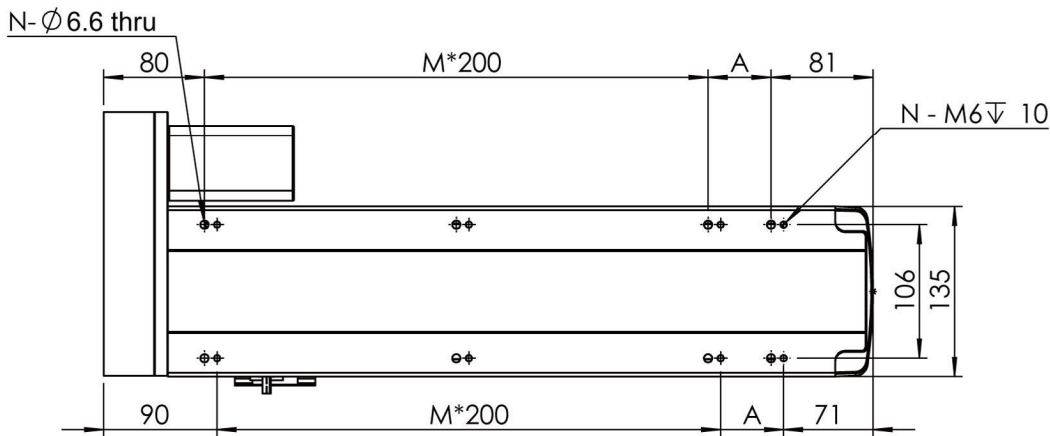
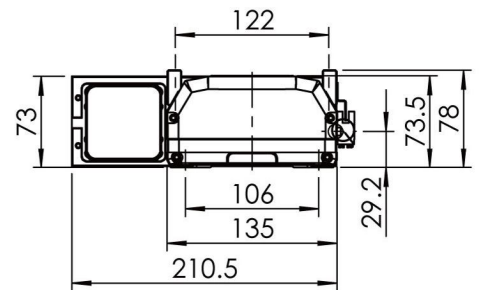
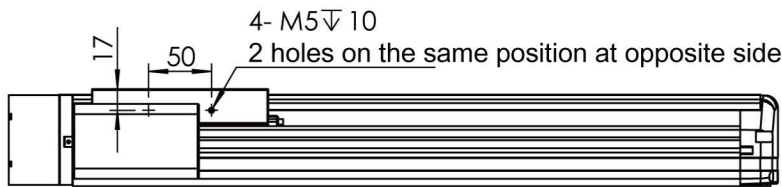
Unit : mm

Stroke	300	400	500	600	700	800	900	1000
L	561	661	761	861	961	1061	1161	1261
A	200	100	200	100	200	100	200	100
M	1	2	2	3	3	4	4	5
N	6	8	8	10	10	12	12	14

ETHS14 Motor Left Side



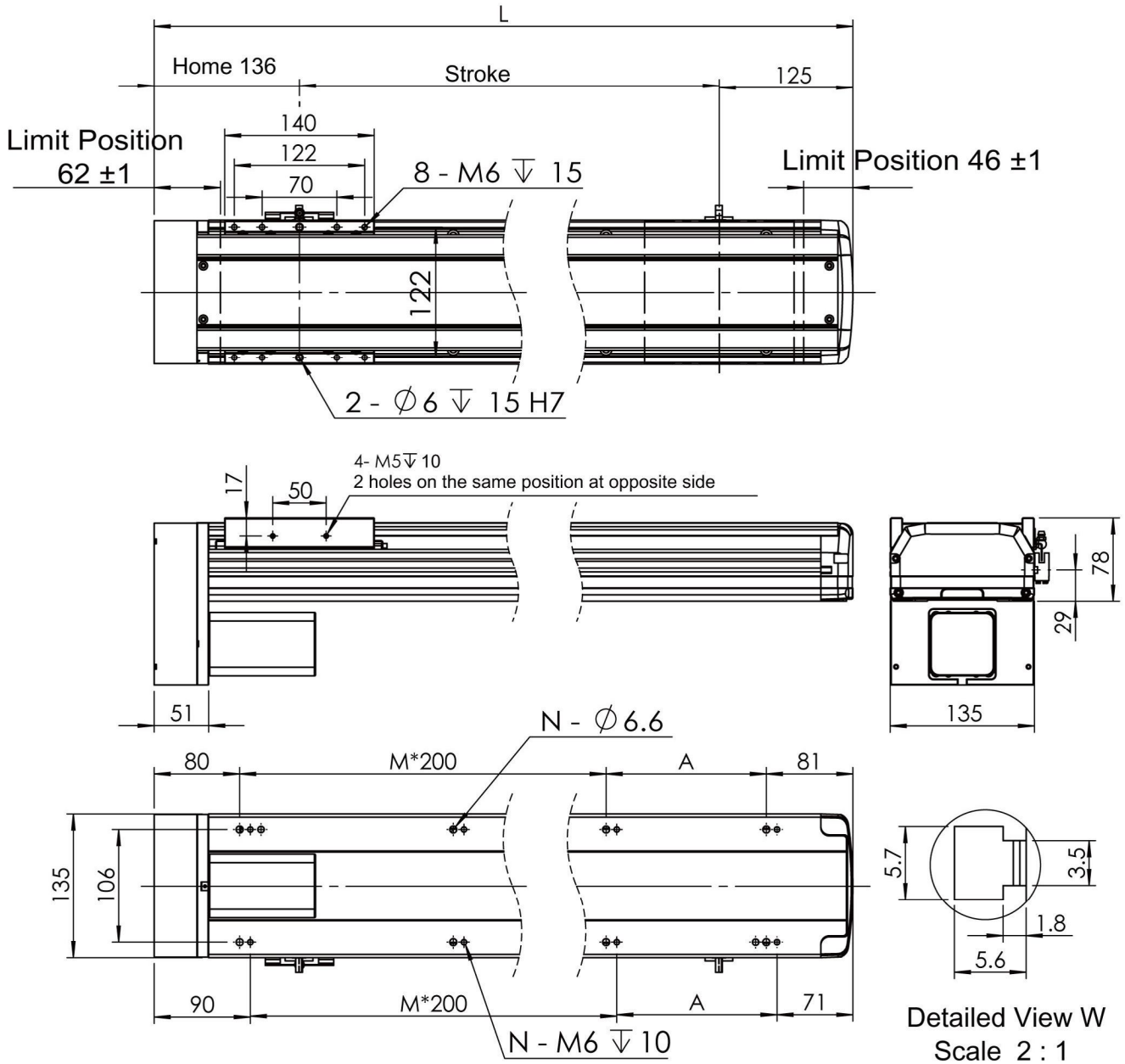
Detailed View Q
Scale 2 : 1



Unit : mm

Stroke	300	400	500	600	700	800	900	1000
L	561	661	761	861	961	1061	1161	1261
A	200	100	200	100	200	100	200	100
M	1	2	2	3	3	4	4	5
N	6	8	8	10	10	12	12	14

ETHS14 Motor Bottom Side



Unit : mm

Stroke	300	400	500	600	700	800	900	1000
L	561	661	761	861	961	1061	1161	1261
A	200	100	200	100	200	100	200	100
M	1	2	2	3	3	4	4	5
N	6	8	8	10	10	12	12	14