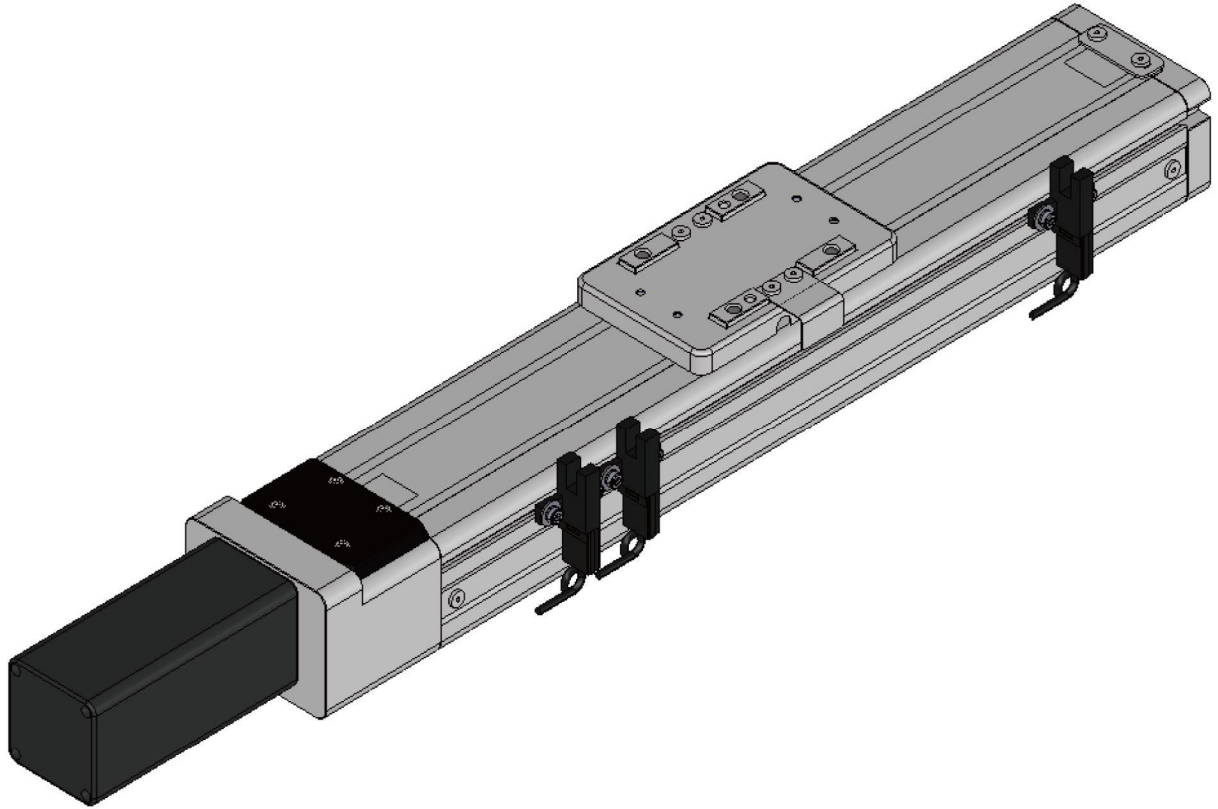


# ETHS6M Single Axis Ball Screw Actuator



Max. Stroke 500mm

Max. Speed 1000mm/s

Motor Power 100W

Ball Screw O. D.  $\phi$  12mm

Linear Guide Way 42x9.5-1

## Order Coding

**ETHS6M - L5 - 200 - BC - M10B - C 4 - M5 - 0001**

Model no. Special Order no.

Lead of Ball Screw

2	2mm
5	5mm
10	10mm
20	20mm

Stroke

200-500mm
Gap 100

Motor Position

BC	Exposed
----	---------

Motor Brand

M	Mitsubishi
P	Panasonic
Y	Yaskawa
T	Delta

Motor Power

10	100W
----	------

Brake

B
---

※If no indication, it means no Brake

Home Sensor

External Type	
C	Motor Side
D	Anti-Motor Side
No Sensor	
E	No Sensor

Limit Sensor

External Type	
3	1 pc
4	2 pcs
No Sensor	
5	No Sensor

Mounting Holes

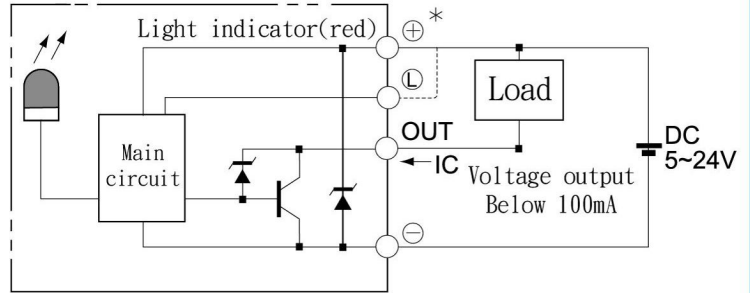
Mounting from Bottom	M5
----------------------	----

# ETHS6M Single Axis Ball Screw Actuator

## Specification

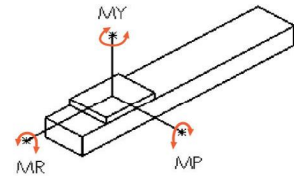
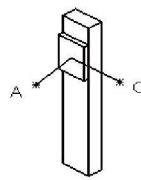
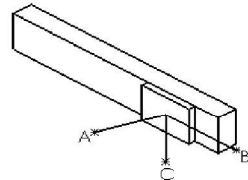
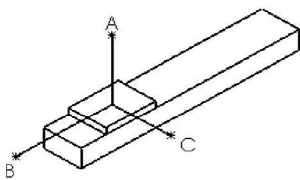
Spec	Repeatability (mm)		±0.01			
	Ball Screw Lead (mm)		2	5	10	20
	Max. Speed (mm/s)		100	250	500	1000
	Max. Load Capacity	Horizontal (kg)	30	30	15	10
		Vertical (kg)	15	10	5	2
	Rated Thrust (N)		122	490	245	85
	Stroke (mm)		200-500mm/Gap 100			
Parts	AC Servo Motor Power (W)		100			
	Ball Screw O.D. (mm)		C7Ø12			
	High Rigidity Linear Guide Way (mm)		W42X9.5			
	Coupling (mm)		8x6			
	Home Sensor	External	EE-SX672(NPN)			

## Sensor Layout



## Allowable Overhang Table

## Static Loading Moment



Unit : mm

Horizontal Installation		A	B	C
2 Lead	10kg	600	55	147
	30kg	160	13	36
5 Lead	10kg	500	43	107
	30kg	125	10	24
10 Lead	3kg	790	145	310
	8kg	280	49	107
	15kg	135	23	50
20 Lead	3kg	325	119	198
	6kg	156	55	93
	10kg	87	30	52

Unit : mm

Wall Mount Installation		A	B	C
2 Lead	15kg	90	34	580
	30kg	35	13	160
5 Lead	15kg	63	25	304
	30kg	22	9	119
10 Lead	3kg	304	140	776
	8kg	104	48	273
	15kg	48	22	131
20 Lead	3kg	193	116	321
	6kg	91	54	153
	10kg	50	30	86

Unit : mm

Vertical Installation		A	C
2 Lead	5kg	125	125
	15kg	42	42
5 Lead	2kg	250	250
	4kg	125	125
	10kg	50	50
10 Lead	1kg	446	446
	2kg	223	223
20 Lead	5kg	89	89
	1kg	353	353
2kg	177	177	

Unit : Nm

Horizontal Operation	
MY	70
MP	80
MR	75

- ※ The value in the table indicates the center of gravity °
- ※ Under conforming catalog specification, the guarantee life is 10,000 km.
- ※ The catalog specification is not applicable to use for ceiling-mount. Please contact us for details.

## Applicable Motor Brand

Brand	Label	Brake	Motor Power (W)	AC-Voltage (V)	Motor Model	Driver Model
Mitsubishi	M	No Brake (Horizontal Type)	100	220	HG - KR13	MR-J4-10A
		With Brake (Vertical Type)	100	220	HG - KR13B	MR-J4-10A
Panasonic	P	No Brake (Horizontal Type)	100	220	MSMD012G1U	MADHT1505
		With Brake (Vertical Type)	100	220	MSMD012G1V	MADHT1505
Delta	T	No Brake (Horizontal Type)	100	220	ECMA-C20401ES	ASD-B20121-B
		With Brake (Vertical Type)	100	220	ECMA-C20401FS	ASD-B20121-B

