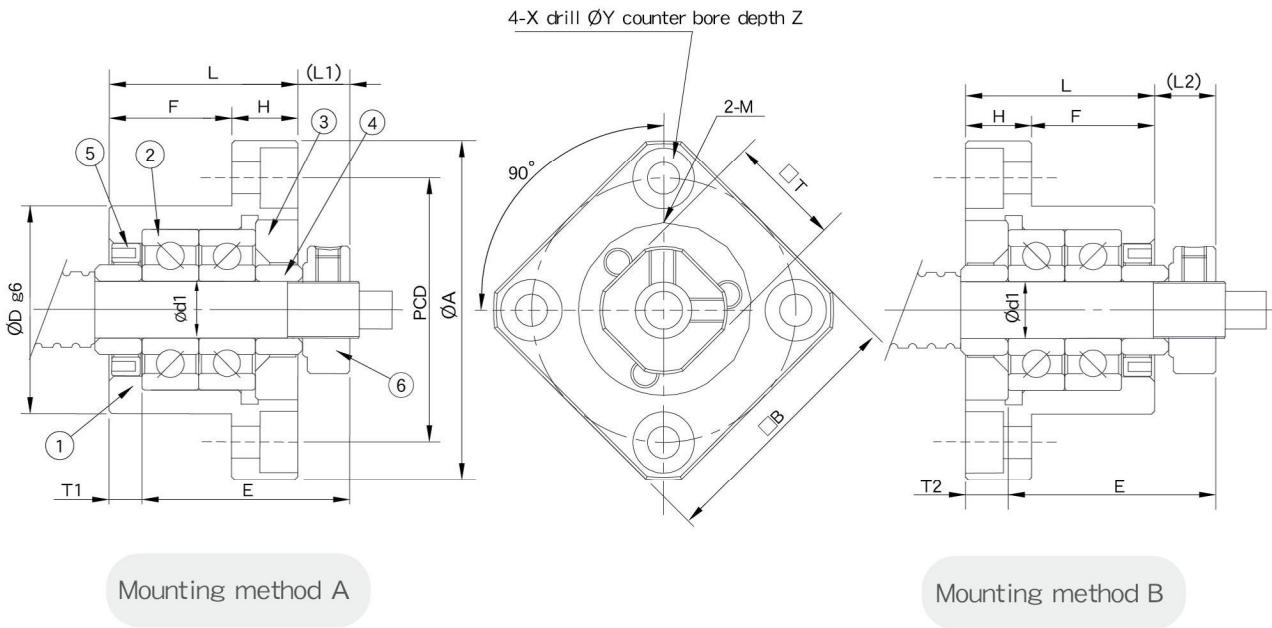


Support Unit FK
(fixed-side round type)

No.	Part name	Qty
1	Housing	1
2	Bearing	1 set
3	Holding lid	1
4	Collar	2
5	Seal	2
6	Lock nut	1set



FK05~FK08



Mounting method A

Mounting method B

Unit : mm

Model No.	Shaft diameter d1	L	H	F	E	Dg6	A	PCD	B	Mounting method A		Mounting method B		X	Y	Z	M	T	Weight (Kgs)
										L1	T1	L2	T2						
FK05	5	16.5	6	10.5	18.5	20 -0.007 -0.02	34	26	26	5.5	3.5	5	3	3.4	6.5	3.5	M3	11	0.09
FK06	6	20	7	13	22	22 -0.007 -0.02	36	28	28	5.5	3.5	6.5	4.5	3.4	6.5	4	M3	12	0.1
FK08	8	23	9	14	26	28 -0.007 -0.02	43	35	35	7	4	8	5	3.4	6.5	4	M3	14	0.16

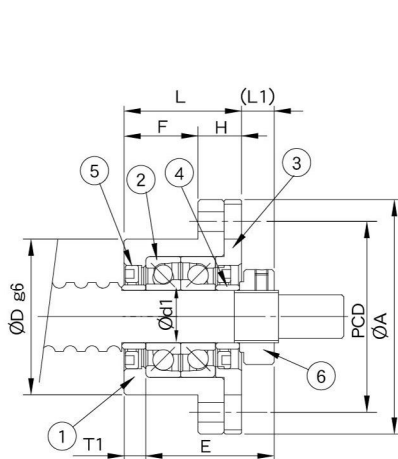
Support Unit FK (fixed-side round type)

No.	Part name	Qty
1	Housing	1
2	Bearing	1 set
3	Holding lid	1
4	Collar	2
5	Seal	1
6	Lock nut	1set

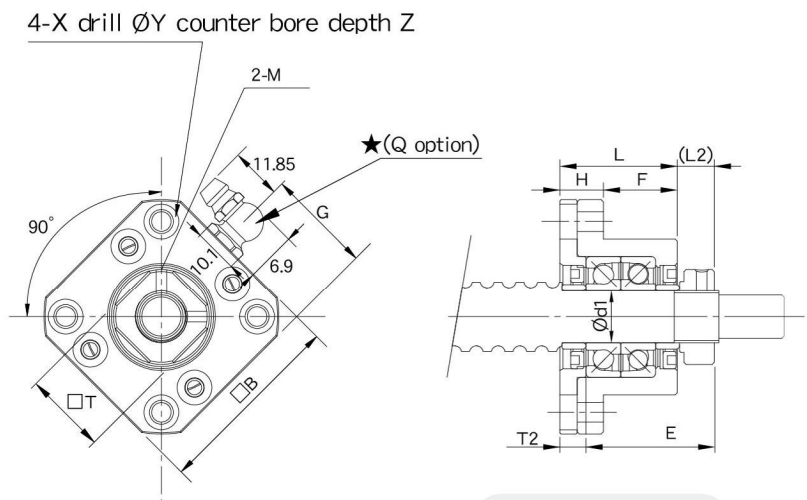


The position of oil grease is for reference only, please visit our website to get more information on it.

FK10~FK30



Mounting method A



Mounting method B

Unit : mm

Model No.	Shaft diameter d1	L	H	F	E	Dg6	A	PCD	B	Mounting method A		Mounting method B		X	Y	Z	M	T	G	Q	Weight (Kgs)	
										L1	T1	L2	T2									
FK10	10	27	10	17	29.5	34	-0.009 -0.025	52	42	42	7.5	5	8.5	6	4.5	8	4	M3	16	-	-	0.24
FK12	12	27	10	17	29.5	36	-0.009 -0.025	54	44	44	7.5	5	8.5	6	4.5	8	4	M4	19	-	-	0.26
FK15	15	32	15	17	36	40	-0.009 -0.025	63	50	52	10	6	12	8	5.5	9.5	6	M4	22	26	M6	0.41
FK17	17	45	22	23	47	50	-0.009 -0.025	77	62	61	11	9	14	12	6.6	11	10	M4	24	30.5	M6	0.81
FK20	20	52	22	30	50	57	-0.010 -0.029	85	70	68	8	10	12	14	6.6	11	10	M4	30	34	M6	1.05
FK25	25	57	27	30	59	63	-0.010 -0.029	98	80	79	13	10	20	17	9	15	13	M5	35	39.5	M6	1.52
FK30	30	62	30	32	61	75	-0.010 -0.029	117	95	93	11	12	17	18	11	17.5	15	M6	40	46.5	M6	2.21

Support Unit FK (fixed-side round type)

Order Coding	Model No.	Surface treatment	Applicable ballscrew accuracy grade	Bearing		Delivery date
				Model No.	Max. Starting torque (gf-cm)	
FK06	FK06	Black Oxide	C3~C10	706A P5	50	EX-STOCK
FK06_C5			C5 ~ C10	706A P0	50	EX-STOCK
FK06_C3			C3	706A P5	50	EX-STOCK
FK06_N		Electroless Nickel Plating	C3~C10	706A P5	50	3 days
FK06_C5N			C5 ~ C10	706A P0	50	3 days
FK06_C3N			C3	706A P5	50	3 days
FK08	FK08	Black Oxide	C3 ~ C10	708A P5	90	EX-STOCK
FK08_C5			C5 ~ C10	708A P0	90	EX-STOCK
FK08_C3			C3	708A P5	90	EX-STOCK
FK08_N		Electroless Nickel Plating	C3 ~ C10	708A P5	90	EX-STOCK
FK08_C5N			C5 ~ C10	708A P0	90	3 days
FK08_C3N			C3	708A P5	90	3 days
FK10	FK10	Black Oxide	C3 ~ C10	7000A P5	190	EX-STOCK
FK10_C5			C5 ~ C10	7000A P0	190	EX-STOCK
FK10_C3			C3	7000A P5	190	EX-STOCK
FK10_N		Electroless Nickel Plating	C3 ~ C10	7000A P5	190	EX-STOCK
FK10_C5N			C5 ~ C10	7000A P0	190	3 days
FK10_C3N			C3	7000A P5	190	3 days
FK12	FK12	Black Oxide	C3 ~ C10	7001A P5	210	EX-STOCK
FK12_C5			C5 ~ C10	7001A P0	210	EX-STOCK
FK12_C3			C3	7001A P5	210	EX-STOCK
FK12_N		Electroless Nickel Plating	C3 ~ C10	7001A P5	210	EX-STOCK
FK12_C5N			C5 ~ C10	7001A P0	210	EX-STOCK
FK12_C3N			C3	7001A P5	210	EX-STOCK
FK15	FK15	Black Oxide	C3 ~ C10	7002A P5	230	EX-STOCK
FK15_C5			C5 ~ C10	7002A P0	230	EX-STOCK
FK15_C3			C3	7002A P5	230	EX-STOCK
FK15_N		Electroless Nickel Plating	C3 ~ C10	7002A P5	230	EX-STOCK
FK15_C5N			C5 ~ C10	7002A P0	230	EX-STOCK
FK15_C3N			C3	7002A P5	230	3 days



Black Oxide
(Application : General case)



Electroless Nickel Plating
(Application : Clean room)



Black Oxide
(Application : General case)



Electroless Nickel Plating
(Application : Clean room)

Note :

1. All types make Preload.
2. All of bearings use Japanese & Taiwanese brand bearings (Model No. in blue), Assembly by DF way. The most suitable way for ballscrew use.

Support Unit FK (fixed-side round type)

Order Coding	Model No.	Surface treatment	Applicable ballscrew accuracy grade	Bearing		Delivery date
				Model No.	Max. Starting torque (gf-cm)	
FK17	FK17	Black Oxide	C3 ~ C10	7203A P5	370	EX-STOCK
FK17_C3			C3	7203A P5	370	3 days
FK17_N		Electroless Nickel Plating	C3 ~ C10	7203A P5	370	EX-STOCK
FK17_C3N			C3	7203A P5	370	3 days
FK20	FK20	Black Oxide	C3 ~ C10	7204 P5	550	EX-STOCK
FK20_C5			C5 ~ C10	7204 P0	550	EX-STOCK
FK20B_C5			C5 ~ C10	7204B P0	550	EX-STOCK
FK20_C3			C3	7204 P5	550	EX-STOCK
FK20_N		Electroless Nickel Plating	C3 ~ C10	7204 P5	550	EX-STOCK
FK20_C5N			C5 ~ C10	7204 P0	550	3 days
FK20B_C5N			C5 ~ C10	7204B P0	550	3 days
FK20_C3N			C3	7204 P5	550	3 days
FK25			FK25	Black Oxide	C3 ~ C10	7205 P5
FK25_C5	C5 ~ C10	7205 P0			730	EX-STOCK
FK25B_C5	C5 ~ C10	7205B P0			730	EX-STOCK
FK25_C3	C3	7205 P5			730	3 days
FK25_N	Electroless Nickel Plating	C3 ~ C10		7205 P5	730	EX-STOCK
FK25_C5N		C5 ~ C10		7205 P0	730	3 days
FK25B_C5N		C5 ~ C10		7205B P0	730	3 days
FK25_C3N		C3		7205 P5	730	3 days
FK30_C5		FK30		Black Oxide	C5 ~ C10	7206 P0
FK30B_C5	C5 ~ C10		7206B P0		1050	EX-STOCK
FK30_C5N	Electroless Nickel Plating		C5 ~ C10	7206 P0	1050	EX-STOCK
FK30B_C5N			C5 ~ C10	7206B P0	1050	3 days



Black Oxide
(Application : General case)

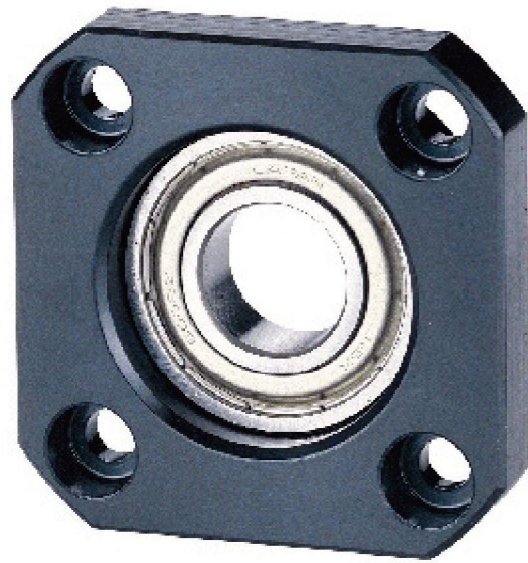


(Application : Clean room)
Electroless Nickel Plating

Note :

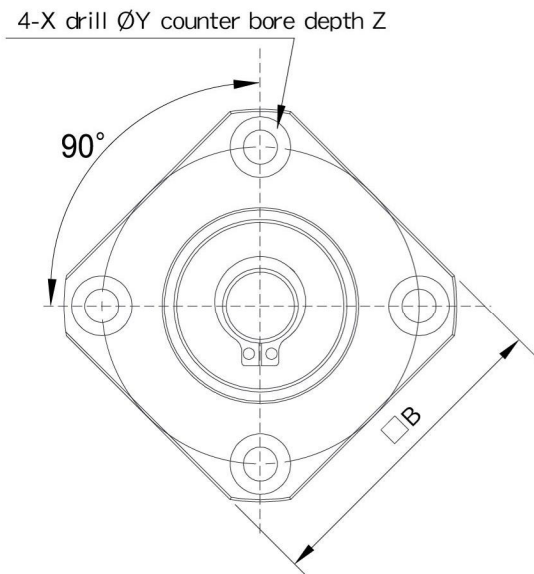
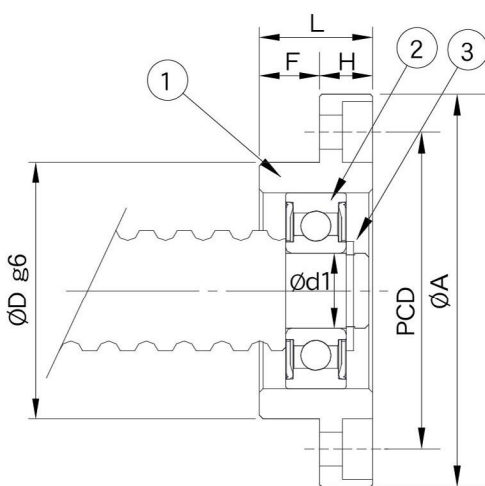
1. All types make Preload.
2. All of bearings use Japanese & Taiwanese brand bearings (Model No. in blue), Assembly by DF way. The most suitable way for ballscrew use.
3. The standard type is without Q, if required, please advise in advance.

Support Unit FF
(Supported-side round type)



No.	Part name	Qty
1	Housing	1
2	Bearing	1 set
3	Snap ring	1

FF



Unit : mm

Model No.	Shaft diameter d1	L	H	F	Dg6	A	PCD	B	X	Y	Z	Bearing	Snap ring	Weight (Kgs)
FF06	6	10	6	4	22 $\begin{smallmatrix} -0.007 \\ -0.02 \end{smallmatrix}$	36	28	28	3.4	6.5	3.5	606ZZ	S 06	0.07
FF10	8	12	7	5	28 $\begin{smallmatrix} -0.007 \\ -0.02 \end{smallmatrix}$	43	35	35	3.4	6.5	4	608ZZ	S 08	0.09
FF12	10	15	7	8	34 $\begin{smallmatrix} -0.009 \\ -0.025 \end{smallmatrix}$	52	42	42	4.5	8	4	6000ZZ	S 10	0.14
FF15	15	17	9	8	40 $\begin{smallmatrix} -0.009 \\ -0.025 \end{smallmatrix}$	63	50	52	5.5	9.5	5.5	6002ZZ	S 15	0.21
FF17	17	20	11	9	50 $\begin{smallmatrix} -0.009 \\ -0.025 \end{smallmatrix}$	77	62	61	6.6	11	6.5	6203ZZ	S17	0.33
FF20	20	20	11	9	57 $\begin{smallmatrix} -0.010 \\ -0.029 \end{smallmatrix}$	85	70	68	6.6	11	6.5	6204ZZ	S 20	0.44
FF25	25	24	14	10	63 $\begin{smallmatrix} -0.010 \\ -0.029 \end{smallmatrix}$	98	80	79	9	14	8.5	6205ZZ	S 25	0.68
FF30	30	27	18	9	75 $\begin{smallmatrix} -0.010 \\ -0.029 \end{smallmatrix}$	117	95	93	11	17	11	6206ZZ	S 30	1.06

Support Unit FF (Supported-side round type)

Order Coding	Model No.	Surface treatment	Applicable ballscrew accuracy grade	Bearing	Delivery date 
FF06_C3	FF06	Black Oxide	C3 ~ C7	606ZZ	EX-STOCK
FF06_C3N		Electroless Nickel Plating	C3 ~ C7	606VV	3 days
FF10_C3	FF10	Black Oxide	C3 ~ C7	608ZZ	EX-STOCK
FF10_C3N		Electroless Nickel Plating	C3 ~ C7	608VV	EX-STOCK
FF12_C3	FF12	Black Oxide	C3 ~ C7	6000ZZ	EX-STOCK
FF12_C3N		Electroless Nickel Plating	C3 ~ C7	6000VV	EX-STOCK
FF15_C3	FF15	Black Oxide	C3 ~ C7	6002ZZ	EX-STOCK
FF15_C3N		Electroless Nickel Plating	C3 ~ C7	6002VV	EX-STOCK
FF17_C3	FF17	Black Oxide	C3 ~ C7	6203ZZ	EX-STOCK
FF17_C3N		Electroless Nickel Plating	C3 ~ C7	6203VV	EX-STOCK
FF20_C3	FF20	Black Oxide	C3 ~ C7	6204ZZ	EX-STOCK
FF20_C3N		Electroless Nickel Plating	C3 ~ C7	6204VV	EX-STOCK
FF25_C3	FF25	Black Oxide	C3 ~ C7	6205ZZ	EX-STOCK
FF25_C3N		Electroless Nickel Plating	C3 ~ C7	6205VV	EX-STOCK
FF30_C3	FF30	Black Oxide	C3 ~ C7	6206ZZ	EX-STOCK
FF30_C3N		Electroless Nickel Plating	C3 ~ C7	6206VV	EX-STOCK



Black Oxide
(Application : General case)



Electroless Nickel Plating
(Application : Clean room)

Note :

1. It is used double pressed steel cages for Black Oxide type support units .
2. It is used double plastic cages for Electroless Nickel Plating type support units .
3. All of bearings use Japanese & Taiwanese brand bearings.