

Support Unit FKA
(fixed-side round type)

No.	Part name	Qty
1	Housing	1
2	Bearing	1 set
3	Holding lid	1
4	Collar	2
5	Seal	1~2
6	Lock nut	1set

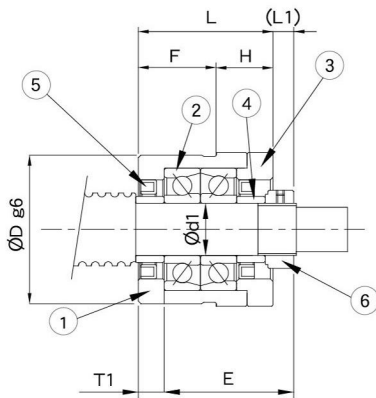


(FKA06~08)

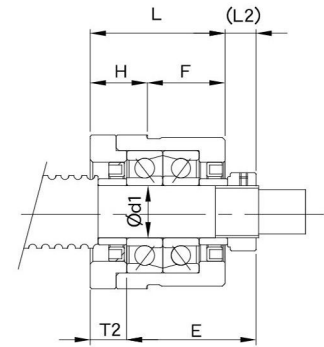
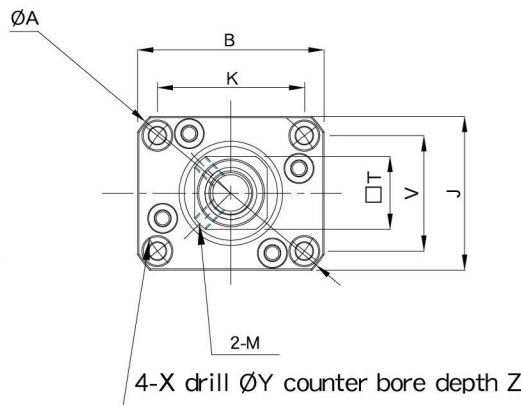


(FKA10~20)

FKA06~FKA20



Mounting method A
FKA15H is not applicable



Mounting method B

Unit : mm

Model No.	Shaft diameter d1	L	H	F	E	Dg6	A	B	J	K	V	Mounting method A		Mounting method B		X	Y	Z	M	T	Weight (Kgs)
												L1	T1	L2	T2						
FKA06	6	20	7	13	22	28 -0.007 -0.02	44	36	30	26.79	20.93	5.5	3.5	6.5	4.5	3.4	6.5	4	M3	12	0.14
FKA08	8	23	9	14	26	28 -0.007 -0.02	44	36	30	26.79	20.93	7	4	8	5	3.4	6.5	4	M3	14	0.16
FKA10	10	27	10	17	29.5	36 -0.009 -0.025	56	48	39	35.7	27.39	7.5	5	8.5	6	4.5	8	4	M3	16	0.27
FKA12	12	27	10	17	29.5	36 -0.009 -0.025	56	48	39	35.7	27.39	7.5	5	8.5	6	4.5	8	4	M4	19	0.25
FKA15	15	32	15	17	36	40 -0.009 -0.025	65	56	43	39.4	30.78	10	6	12	8	5.5	9.5	6	M4	22	0.38
FKA15H	15	43	17	26	40	50 -0.009 -0.025	77	63	52	49.64	38.79	4	7	7	10	5.5	9.5	8	M4	22	0.62
FKA20L	20	41	17	24	43	50 -0.009 -0.025	77	63	52	49.64	38.79	9	7	12	10	5.5	9.5	8	M4	30	0.63
FKA20	20	52	22	30	50	57 -0.010 -0.029	86	72	59	56.74	44.33	8	10	12	14	6.6	11	10	M4	30	0.99

Support Unit FKA (fixed-side round type)

Order Code	Model No.	Surface treatment	Applicable ballscrew accuracy grade	Bearing		Delivery date
				Model No.	Max Starting torque (gf-cm)	
FKA06	FKA06	Black Oxide	C3~C10	706A P5	50	EX-STOCK
FKA06_C5			C5 ~ C10	706A P0	50	3 days
FKA06_C3			C3	706A P5	50	3 days
FKA06_N		Electroless Nickel Plating	C3~C10	706A P5	50	3 days
FKA06_C5N			C5 ~ C10	706A P0	50	3 days
FKA06_C3N			C3	706A P5	50	3 days
FKA08	FKA08	Black Oxide	C3 ~ C10	708A P5	90	EX-STOCK
FKA08_C5			C5 ~ C10	708A P0	90	3 days
FKA08_C3			C3	708A P5	90	3 days
FKA08_N		Electroless Nickel Plating	C3 ~ C10	708A P5	90	EX-STOCK
FKA08_C5N			C5 ~ C10	708A P0	90	3 days
FKA08_C3N			C3	708A P5	90	3 days
FKA10	FKA10	Black Oxide	C3 ~ C10	7000A P5	190	EX-STOCK
FKA10_C5			C5 ~ C10	7000A P0	190	3 days
FKA10_C3			C3	7000A P5	190	3 days
FKA10_N		Electroless Nickel Plating	C3 ~ C10	7000A P5	190	3 days
FKA10_C5N			C5 ~ C10	7000A P0	190	3 days
FKA10_C3N			C3	7000A P5	190	3 days
FKA12	FKA12	Black Oxide	C3 ~ C10	7001A P5	210	EX-STOCK
FKA12_C5			C5 ~ C10	7001A P0	210	EX-STOCK
FKA12_C3			C3	7001A P5	210	3 days
FKA12_N		Electroless Nickel Plating	C3 ~ C10	7001A P5	210	EX-STOCK
FKA12_C5N			C5 ~ C10	7001A P0	210	3 days
FKA12_C3N			C3	7001A P5	210	3 days



(FKA06~FKA08)
Black Oxide
(Application : General case)



(FKA06~FKA08)
Electroless Nickel Plating
(Application : Clean room)



(FKA10~FKA20)
Black Oxide
(Application : General case)



(FKA10~FKA20)
Electroless Nickel Plating
(Application : Clean room)

Note :

1. All types make Preload.
2. All of bearings use Japanese & Taiwanese brand bearings (Model No. in blue), Assembly by DF way. The most suitable way for ballscrew use.

Support Unit FKA (fixed-side round type)

Order Code	Model No.	Surface treatment	Applicable ballscrew accuracy grade	Bearing		Delivery date
				Model No.	Max. Starting torque (gf-cm)	
FKA15	FKA15	Black Oxide	C3 ~ C10	7002A P5	230	EX-STOCK
FKA15_C5			C5 ~ C10	7002A P0	230	3 days
FKA15_C3			C3	7002A P5	230	3 days
FKA15_N		Electroless Nickel Plating	C3 ~ C10	7002A P5	230	EX-STOCK
FKA15_C5N			C5 ~ C10	7002A P0	230	3 days
FKA15_C3N			C3	7002A P5	230	3 days
FKA15H	FKA15H	Black Oxide	C3 ~ C10	7302A P5	380	EX-STOCK
FKA20L	FKA20L	Black Oxide	C3 ~ C10	7004A P5	380	EX-STOCK
FKA20L_C3			C3	7004A P5	380	3 days
FKA20	FKA20	Black Oxide	C3 ~ C10	7204 P5	550	EX-STOCK
FKA20_C5			C5 ~ C10	7204 P0	550	EX-STOCK
FKA20B_C5			C5 ~ C10	7204B P0	550	3 days
FKA20_C3			C3	7204 P5	550	3 days
FKA20_N		Electroless Nickel Plating	C3 ~ C10	7204 P5	550	EX-STOCK
FKA20_C5N			C5 ~ C10	7204 P0	550	3 days
FKA20B_C5N			C5 ~ C10	7204B P0	550	3 days
FKA20_C3N			C3	7204 P5	550	3 days



(FKA10~FKA20)
Black Oxide
(Application : General case)



(FKA10~FKA20)
Electroless Nickel Plating
(Application : Clean room)

Note :

1. All types make Preload.
2. All of bearings use Japanese & Taiwanese brand bearings (Model No. in blue), Assembly by DF way. The most suitable way for ballscrew use.