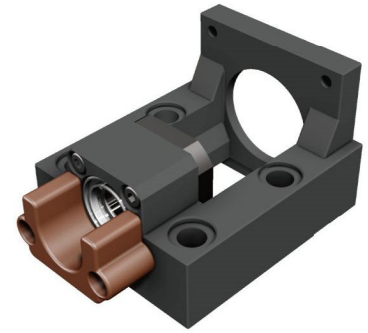
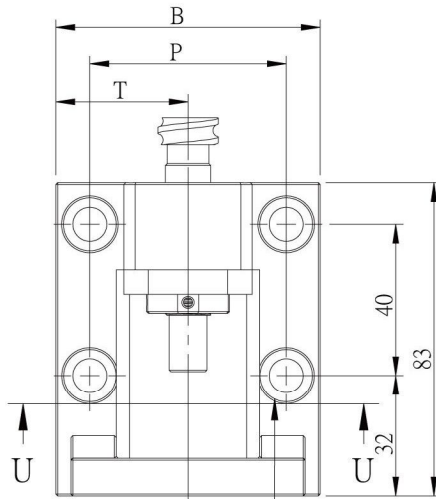
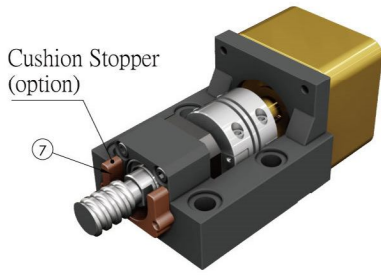
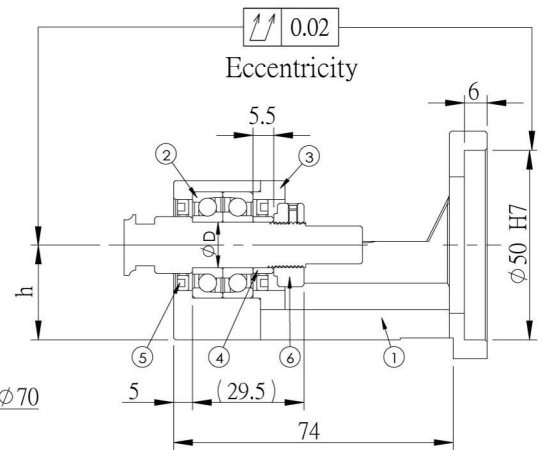
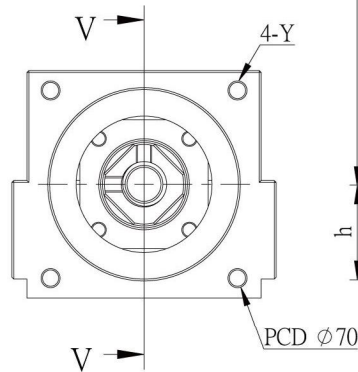
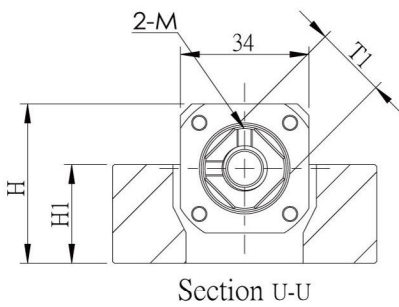


# Motor Bracket MBCE10/12、MBCF10/12



Surface treatment:  
Black Oxide  
/  
Electroless Nickel Plating

No.	Part name	Qty
1	Housing	1
2	Bearing	
	MBC*10 with bearings 7000	1 set
	MBC*12 with bearings 7001	
3	Holding lid	1
4	Collar	2
5	Seal	2
6	Lock nut	1set
7	Cushion Stopper (option)	1



Unit : mm

Model No.	B	P	T	H	H1	h ±0.02	φD	T1	M	Y	S	Q	Weight (Kgs)	Support unit	Suggest Coupling
														Supported-side	
MBCE10-D	70	52	35	42	26	25	10	□16	M3	M5	9	14	-	EF10 AF 10	SGS 34C
MBCE10-DP										M4			-		
MBCE12-D										M5			0.84	EF12 AF 12	
MBCE12-DP										M4			0.86		
MBCF10-D	63	50	31.5	37	21	20	10	□16	M3	M5	6.6	11	-	LF12 LFA 15	
MBCF10-DP										M4			-		
MBCF12-D										M5			-		
MBCF12-DP										M4			-		

Note :

1. The matched bearing in the support unit has already done the preload.
2. The matched P5 bearings are assembled in DF way, which is the most suitable for ball screw use.

# Illustration for MBCF10/12

