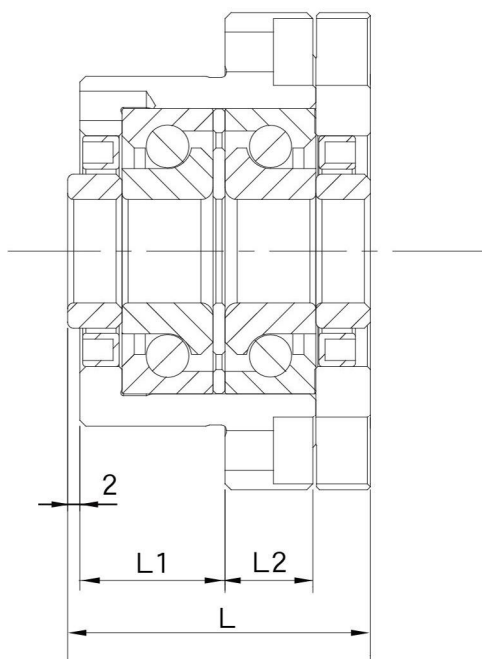


MBK type support Unit  
(heavy-load)

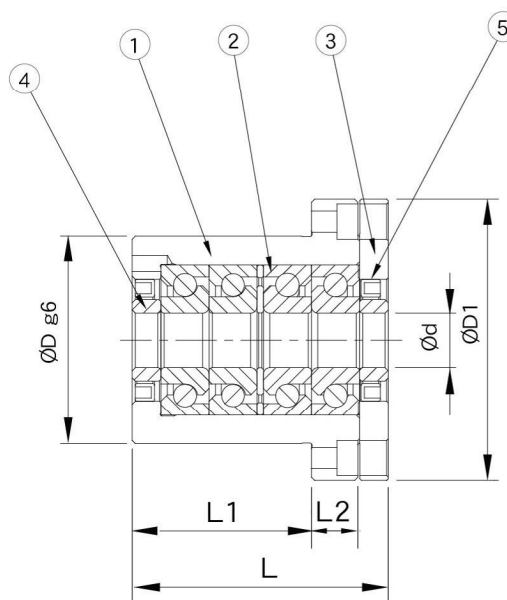


No.	Part name	Qty
1	Housing	1
2	Bearing	1 set
3	Holding lid	1
4	Collar	2
5	Seal	2
6	Lock nut	1 set

MBK



Assembly way DF



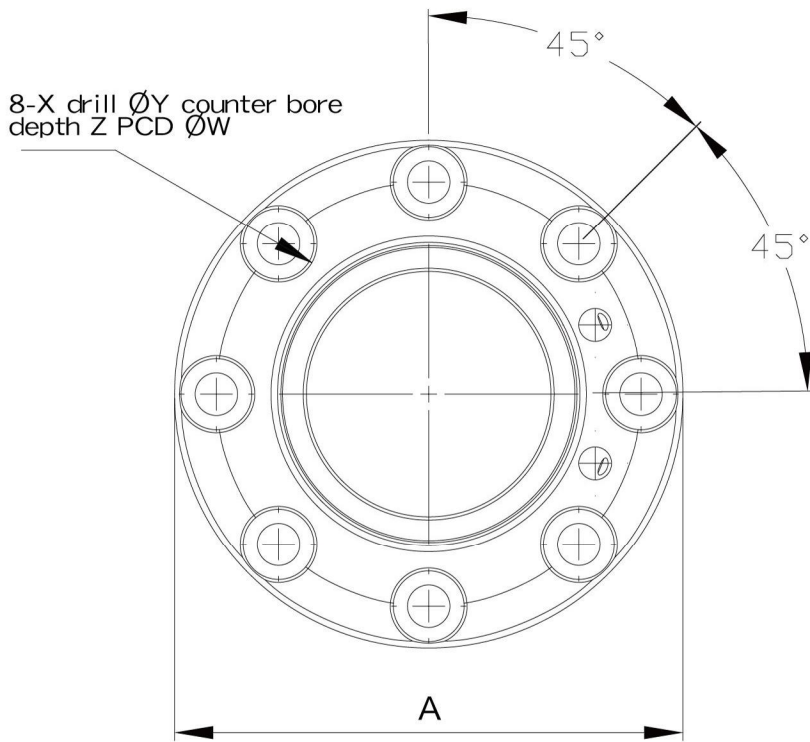
Assembly way DFF

Unit : mm

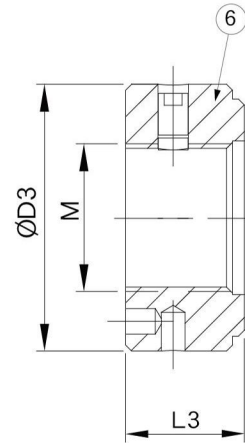
Model No.	Dimensions of support unit											
	d	D	D1	L	L1	L2	A	W	X	Y	Z	H
MBK 15DF - G	15	58	79	50	24	14.5	79	66	6.6	11	7	M6
MBK 17DF - G	17	58	79	50	24	14.5	79	66	6.6	11	7	M6
MBK 17DFF - G		65	88	80	56		88	74				
MBK 20DF - G	20	58	79	50	24	14.5	79	66	6.6	11	7	M6
MBK 20DFF - G		65	88	80	56		88	74				

Note :

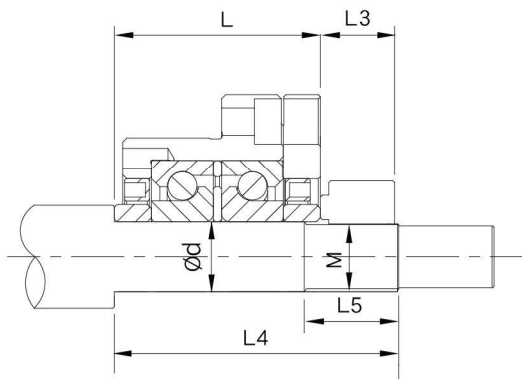
1. Inside bearings use Japanese & Taiwanese P4 grade TAC 60 degree contact ball bearing.



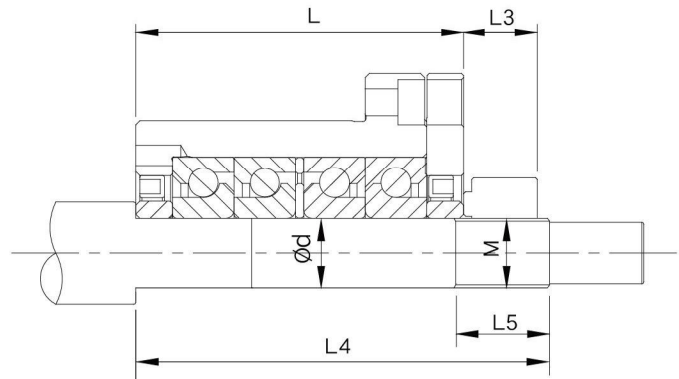
Shaft diameter  $\varnothing d \leq 20$



Lock nut



DF  
Dimensions of shaft end



DFF  
Dimensions of shaft end

Unit : mm

Model No.	Basic dynamic load rating $C_a$ (N)	limiting axial load (N)	preload (N)	axial rigidity (N/ $\mu m$ )	starting torque (N·cm)	permissible rotational speed (min <sup>-1</sup> )	Lock nut			Weight (Kgs)	Dimensions of shaft end		
							M	D3	L3		$d$	L4	L5
MBK 15DF	21900	26600	1000	555	19	7600	M15X1	-	-	1.44	15 <sup>+0.004</sup> / <sub>-0.017</sub>	69	23
MBK 17DF	23000	26600	1450	630	19		M17X1	37	18	1.44	17 <sup>+0.004</sup> / <sub>-0.017</sub>	69	23
MBK 17DFF	47500	53500	2010	920	32	6900	M17X1	37	18	1.7	17 <sup>+0.004</sup> / <sub>-0.017</sub>	101	23
MBK 20DF	23000	26600	1450	630	19		M20X1	40	18	1.22	20 <sup>+0.005</sup> / <sub>-0.020</sub>	69	23
MBK 20DFF	47500	53500	2010	920	32	M20X1	40	18	2.22	20 <sup>+0.005</sup> / <sub>-0.020</sub>	101	23	