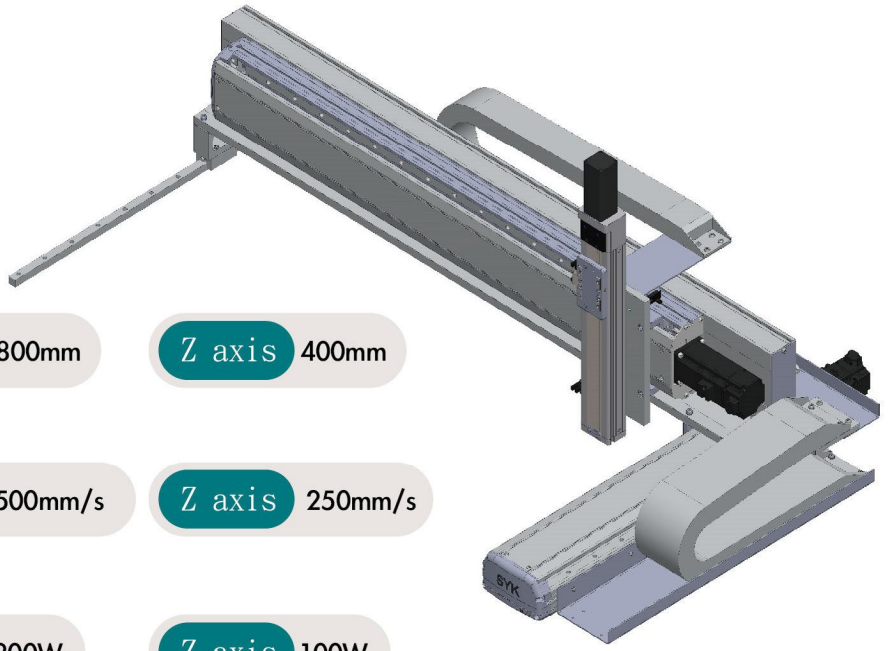


# XYTHS662 X, Y, Z Axis Ball Screw Actuator



**Max. Stroke**

- X axis 1000mm
- Y axis 800mm
- Z axis 400mm

**Max. Speed**

- X axis 500mm/s
- Y axis 500mm/s
- Z axis 250mm/s

**AC Servo Motor Power**

- X axis 400W
- Y axis 200W
- Z axis 100W

**Specification**

Item	X axis	Y axis	Z axis
Model Type	ETHS14	ETHS14	ETHS6M
Repeatability (mm)	±0.01	±0.01	±0.01
Lead (mm)	10	10	5
Max. Speed (mm/s) ※3	500	500	250
Stroke (Gap 100 mm)	300-1000	300-800	200-400
AC Servo Motor Power (w)	400	200	100
Environment	0-40°C · 85% RH Below		

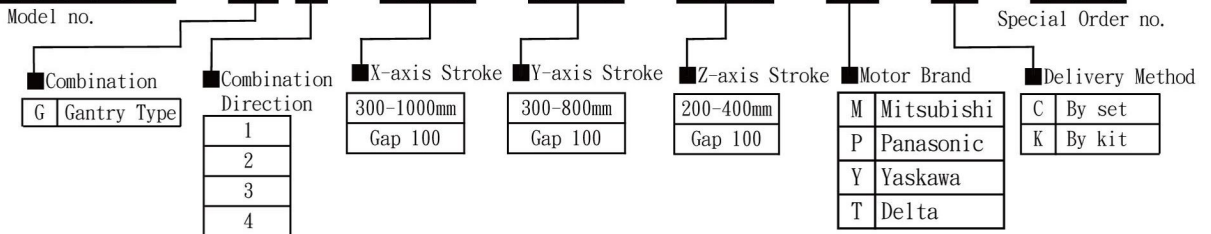
※3: The Max. speed is based on 3000RPM AC servo motor.

**Max. Load Capacity**

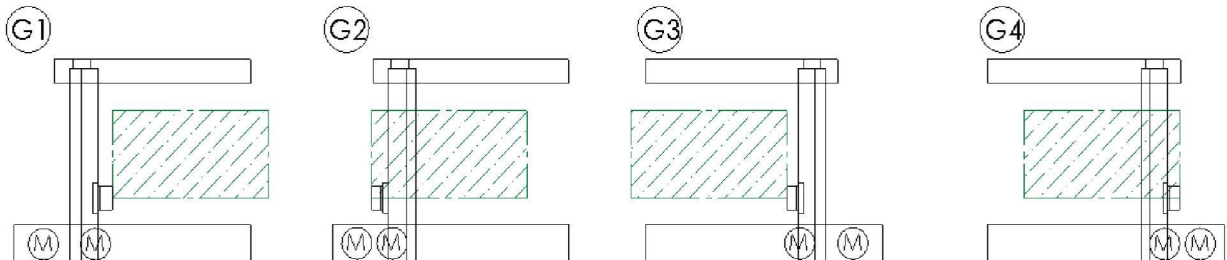
Load Capacity of Z axis (kg)	Y axis Stroke (mm)					
	300	400	500	600	700	800
200	13	13	13	13	13	13
300	13	13	13	13	13	12
400	13	13	13	13	13	11

## ORDER CODING

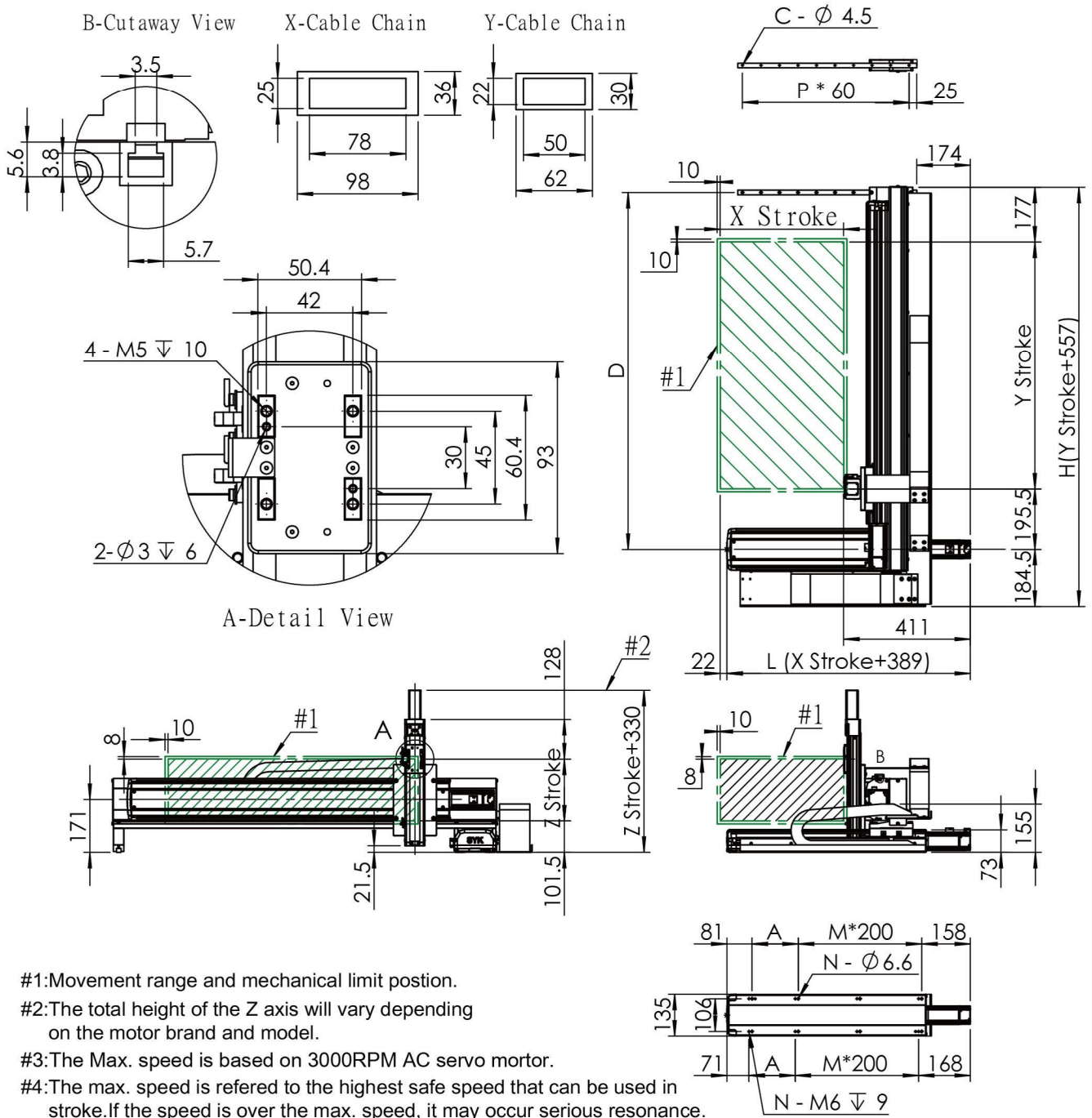
XYTHS662 - G 1 - 400 - 300 - 200 - M - C - 001



## Combination Direction



# XYTHS662 X,Y, Z Axis Ball Screw Actuator



Unit : mm

X-axis Stroke	300	400	500	600	700	800	900	1000
L	689	789	889	989	1089	1189	1289	1389
A	50	150	50	150	50	150	50	150
M	2	2	3	3	4	4	5	5
N	8	8	10	10	12	12	14	14

Unit : mm

Y-axis Stroke	300	400	500	600	700	800
H	857	957	1057	1157	1257	1357
Max. Speed	500					

Unit : mm

Auxiliary X-axis Stroke	300	400	500	600	700	800	900	1000
D	655.5	755.5	855.5	955.5	1055.5	1155.5	1255.5	1355.5
P	7	9	11	12	14	16	17	19
C	8	10	12	13	15	17	18	20